



Sunrise Herald

March 2024 Volume 17 Number 3

Sunrise Division Officers

Superintendent.....William Boorman
 Asst. Superintendent.....Dennis Hagen
 Secretary.....Bob Hochstetter
 Treasurer.....Dave Clifford
 Program Chair.....Gary Myers
 Division AP Chair.....Gerry Meltzer
 Youth Coordinator.....Position open
 Education Chair.....Stewart Jones
 Modular Layout Chair.....Larry Stephens
 Herald Editor.....Bob Hochstetter

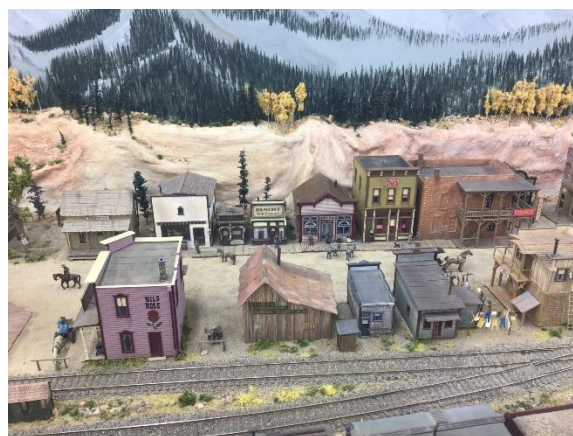
In the Herald

Layout Photos of the Month.....	1
March Meeting Notes.....	2
Next Meeting.....	2
Videos of the Month.....	2
Upcoming Tool Time.....	2
Upcoming Clinic.....	2
Upcoming Show 'n' Tell Theme.....	2
Module Report.....	2
Announcements.....	2-3
Tool Time.....	3-5
Show 'n' Tell.....	6-8
Clinic.....	8-13
Auction Flyer.....	14-17

Layout Photos of the Month

This month's three photographs were taken on Bob Rothgery's home layout.

I need photographs for the Herald. If you have photographs of your layout that you would like to have included here, please send them to me. (Ed.)



March Meeting Notes

The regular monthly meeting of the Sunrise Division of the National Model Railroad Association was held March 7, 2024, at Holy Love Lutheran Church. Assistant Superintendent Dennis Hagen conducted the meeting. The meeting was called to order at 7:05 p.m. Twenty-one members attended in person, and two joined via Zoom.

Dennis began the meeting by asking the members for a self-introduction and to tell the length of time that they had been members of the NMRA.

Announcements, Tool Time, the Clinic and more followed the self-introductions. All of these are included in this issue of the Herald. Dennis adjourned the meeting at 9:00 p.m.

Next Meeting

The next meeting will be Thursday, April 4, 2024, in person at Holy Love Lutheran Church, 4210 S Chambers Road, Aurora, Colorado. The meeting will start at 7:00 p.m. The meeting will also be streamed on Zoom with sign-in between 6:30 and 7:00.

Video of the Month

The layout of the month photos from Bob Rothgery's layout, though it is standard gauge, it looks as if it should be narrow gauge, inspired me to select this video of the Durango and Silverton Narrow Gauge Railroad. (Ed.):
<https://www.youtube.com/watch?v=6EEaj-RgLys>

Upcoming Tool Time

April—NMRA Interchange—Gary Myers

Upcoming Clinic

April—in lieu of a clinic, the Annual Division Auction will be held

Upcoming Show 'n' Tell

April—Outhouses

Reminder

To reduce problems, especially for those who join the meeting on Zoom, we continue to ask that Show 'n' Tell photos, Clinic presentations, and Tool Time

photos be taken before the meeting and sent to:

Gary Myers (garymyers06@comcast.net) for presentation at the meeting, and to the editor (rlhoch422@gmail.com) for inclusion in the Sunrise Herald. (Ed.)

Module Report

The modules are being prepared for the April TCA show. Adam and I have fixed the two sets of modules that caused us problems at the last show. A power bar was mounted under the module to provide power to the LocoNet devices, eliminating stringing power from the command station to the module. The LocoNet devices are now mounted inside the module. Larry Stephens

Announcements

The Foothills Society of Model Railroaders swap meets
Green Mountain Presbyterian Church
12900 W. Alameda Parkway
Lakewood, CO
9:00 a.m. -11:30 a.m.
on the third Saturday of odd numbered months
(303)989-0087 or (303)985-1491

Rocky Mountain Train Show - Spring 2024
April 6th & 7th
Sat 8:00 AM - 9:00 AM - Pre-Registered TCA/NMRA Members
Sat 9:00 AM - 5:00 PM - Public
Sun 9:00 AM - 4:00 PM - Public
National Western Complex
4655 Humboldt St.
Denver, CO 80216
Exhibit Areas
Expo Hall, Hall Of Education - East, Hall Of Education - West, Stadium Hall

Clinicians are needed for the Rocky Mountain Train Show. If you have a clinic that you would like to present, please contact William Boorman.

Kick Off Event! Save the date!

**COLORADO
RAIL PROTO MEET**

Saturday, September 21st, 2024
 9am-5pm—Zoe's Café and Event Center
 715 10th Street, Greeley CO
 5pm-8pm— Colorado Model Railroad Museum
 680 10th Street, Greeley CO
 \$20 admission
 (Includes free dinner at the CMMR)
 Model Displays—Clinics—Hands on Stations—Vendors

www.corpm.org

Hosted by the Colorado Model Railroad Museum and the Northern Colorado Division NMRA




Call for Clinicians
 Rocky Mountain Region Convention
 Salt Lake City----June 2024

If you would like to present a clinic at the Region Convention, please contact Kevin Anderson MMR 752 at 801-842-747 or trainfishfan@gmail.com

**Sunrise Division
 Annual Auction
 April 4, 2024
 during the monthly meeting**
 10% of proceeds to benefit the Sunrise Division
 Select that one quality item that you know you will never use and sell it to a fellow model railroader.

Tool Time

Bill Johnson presented this month's Tool Time. His PowerPoint presentation showed how to make an incredibly useful, manual turnout throw that also powers the frog and changes the frog polarity.

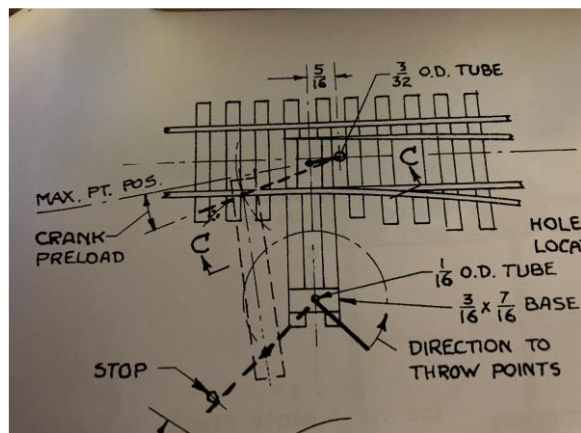
Modified "Slanser" Switch Stands

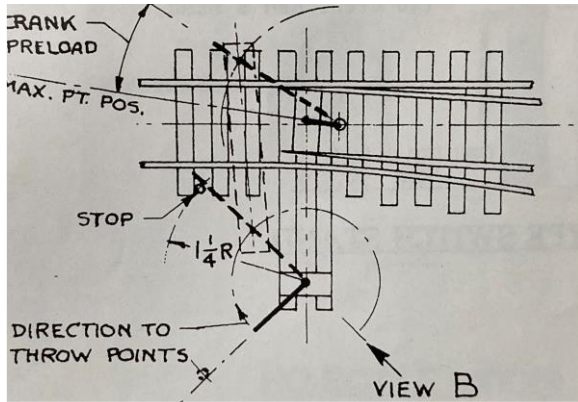


This is a manual operating switch stand

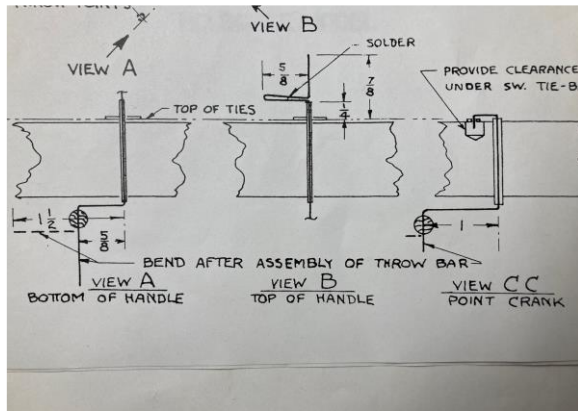
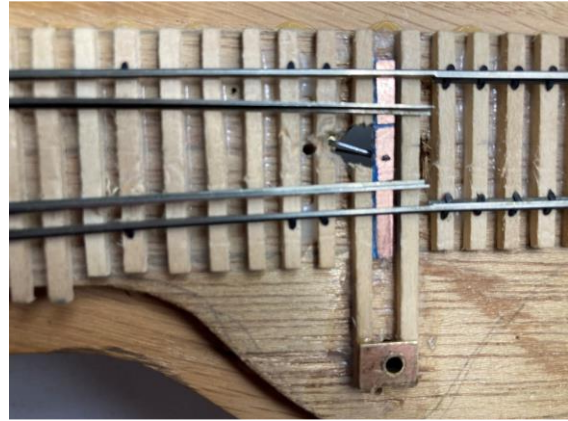


1. Throws the points
2. Shows the correct indication
3. Can act as electrical switch

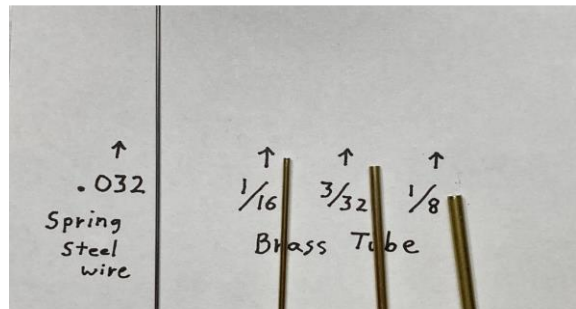




Note: Switch stand base made from 1/8th inch brass tube and flat brass stock



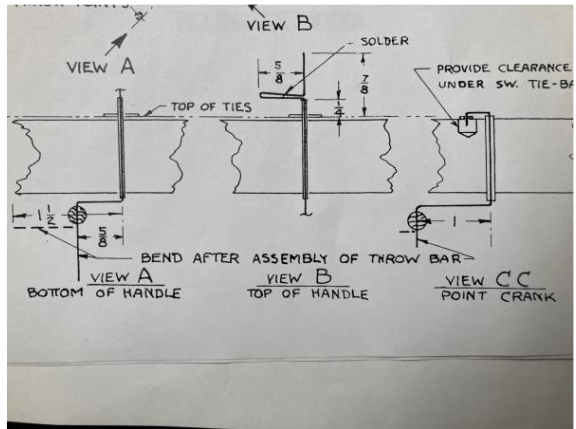
Material needed



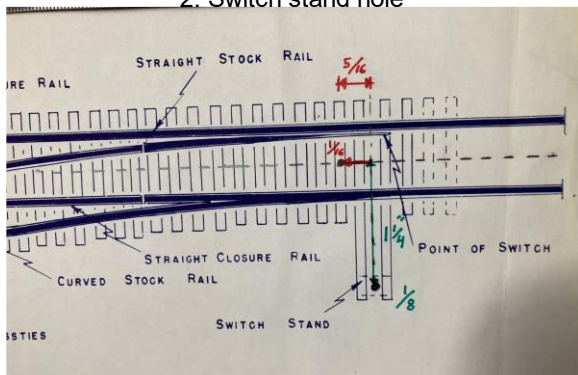
Locate 2 holes



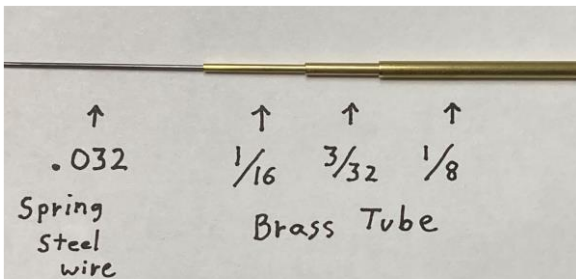
Cross section side view



Locate 1. Switch Throw activator hole
2. Switch stand hole



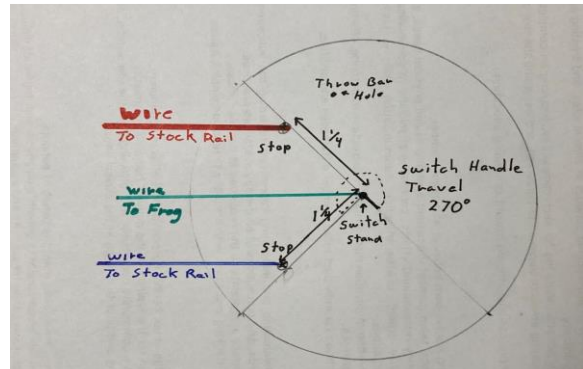
Nesting of steel wire and brass tubes



Punch out Switch target from .025 brass



Underside Template to locate stops and wire diagram to power switch frog



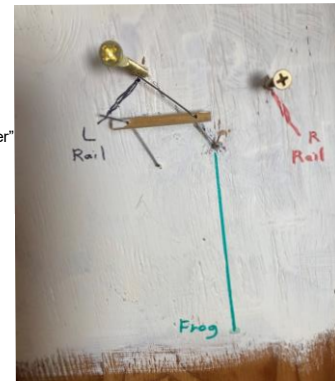
Switch stand components



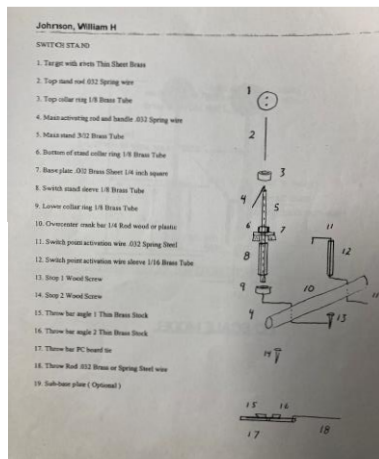
Underside with dowel "over-center" Crank.

Note: Stops are 90 Degrees from switch stand base

Also wire diagram to power frog

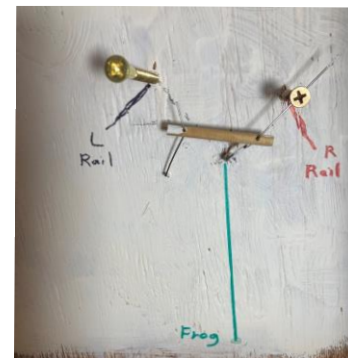


Parts for operating switch stand



Same picture as before but switch thrown to the other route.

Note: stop wire next to R rail stop



Clear track ahead.

THE END

Questions?



Show 'n' Tell

This month's Show 'n' Tell subject was tunnel.

Stu Jones showed these tunnels on his HO scale layout. His narrative follows:



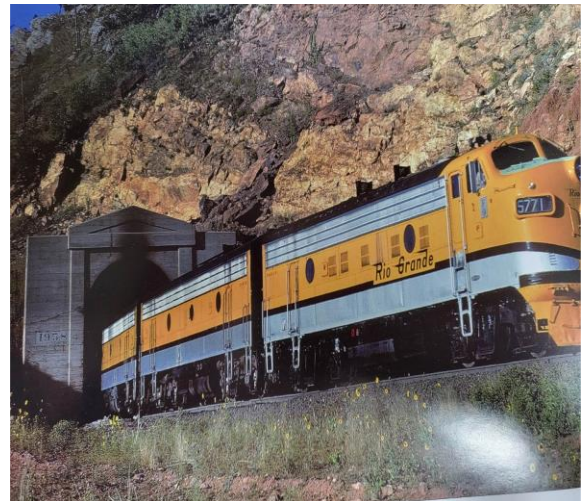
Here the track follows a valley to the left and curves around a protruding rock formation. It was too difficult to make a cut and it was not possible to lay track around it, so a tunnel was the only practical solution. The rock was too unstable to leave the tunnel rock-lined, so it was lined with timber shoring to provide stability. The portal design follows Denver & Rio Grande practice. The sloped upper edge was probably intended to deflect rock falls away from the track below. Photo 1 shows the East end of the tunnel. Photo 2 shows the West end. The canyon was inspired by Glenwood Canyon.

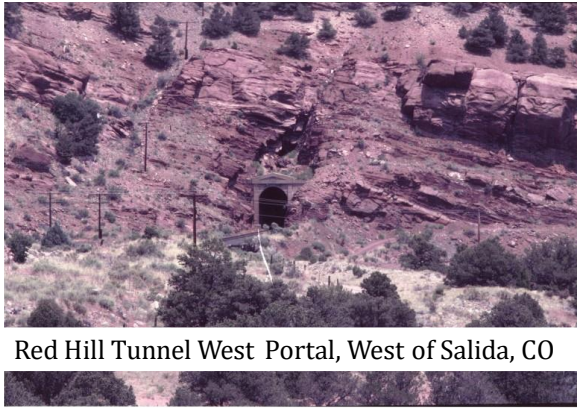


The railroad needed a loop to gain elevation. The solution was to bore a spiral tunnel as was done on the Canadian Pacific in Eastern British Columbia just below Kicking Horse Pass. The photos show a merchandise freight entering the upper portal and leaving the lower portal. Stu Jones

Gary Myers showed these photos of prototype and model railroad Rio Grande tunnels.

Standard D&RGW Tunnel Portal (Plain, CO)





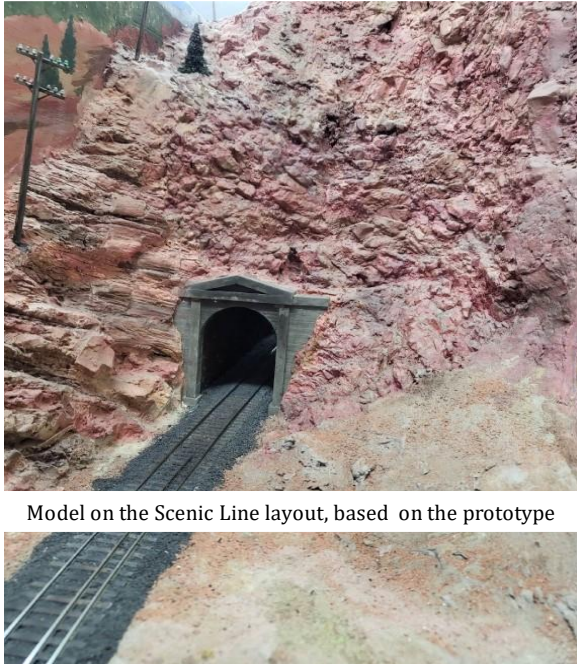
Red Hill Tunnel West Portal, West of Salida, CO



Red Hill Tunnel East Portal on the Scenic Line layout



Larry Stephens showed these pictures of prototype tunnels.

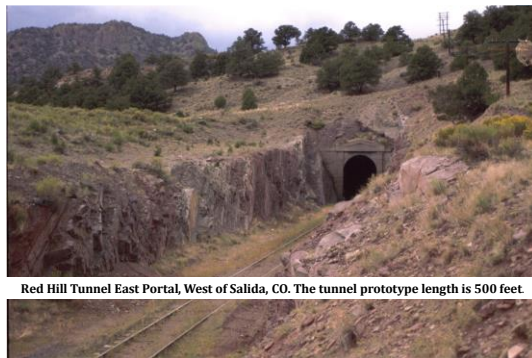


Model on the Scenic Line layout, based on the prototype

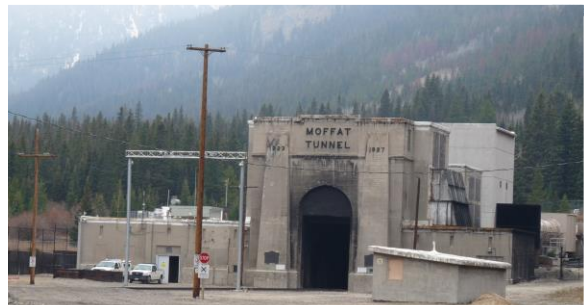


On the original Rio Grande route from Canon City.

The tunnel was built when the Rio Grande was converted to standard gauge. The tunnel can be walked. The photo was taken in 2010 and the weeds are now much higher.



Red Hill Tunnel East Portal, West of Salida, CO. The tunnel prototype length is 500 feet.



West of Rollinsville. This photo was taken in 2010 before the power station destroyed the view of the tunnel entrance.



Under the Tennessee Pass Highway Located between Leadville and I-70. You can walk this tunnel. Bring a coat as the tunnel is about 30 to 40 degrees in the center. The road above the tunnel is one of the most enjoyable Colorado drives. Much like the roads were back in the 60's. More on the rail line: <https://grgardner.livejournal.com/101049.html>



Conway tunnel on my n-scale layout. *Ed.*



The inspiration for my tunnel is this tunnel in Conway, Arkansas on the former Missouri Pacific route between Little Rock and Van Buren, Arkansas. *Ed.*

Clinic

Bill Botkin presented this month's clinic on weathering locomotives. His PowerPoint slides are reproduced here.

Weathering Locomotives

By William E. Botkin



Why weather anyway?

Un-weathered

Weathered



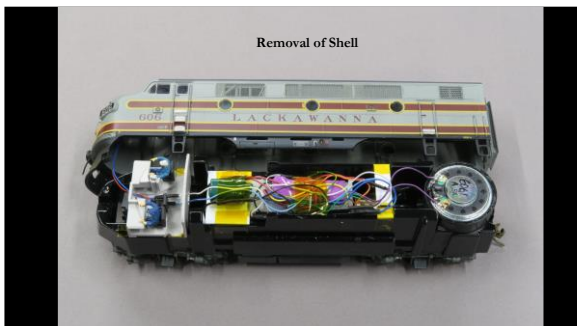
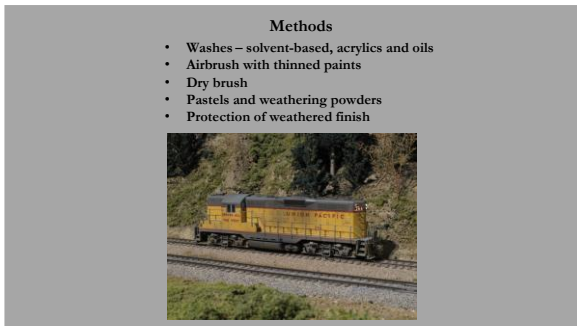
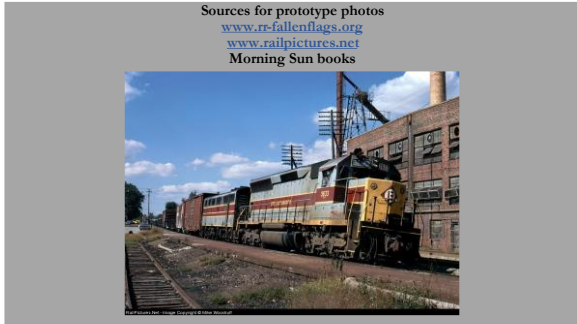
Weathering considerations

- Mental barrier about making a mistake on an expensive model
- Decide on extent of weathering you want to replicate
- Decide on techniques most comfortable using
- Practice!



Safety first!

- Ventilation – Paint booth with outside venting
- Partial face respirator with P100 filters for organic solvents
- Nitrile gloves
- Safety glasses or goggles



Rain and snow effects with washes



More rain and snow effects with washes



Nose weathering on F-units from exhaust



Masking windows and headlights for airbrushing



Weathering dirt, grime and mud with an airbrush

Principal flat weathering colors (Floquil paint names)

- Earth
- Rail brown
- Grime
- Weathered Black
- Engine Black

Use 50/50 paint/thinner except for painting roofs, trucks and fuel tanks

Start light and build up weathering slowly – you can always add more!

Diesel roofs aren't black!
Mask and repaint weathered black



Truck, fuel tank and underframe color
Mix of grimy black (4 parts) and roof brown (3 parts)



Trucks



Pilots show dirt and mud splatters from wheels



Walkways show dirt and are not uniform



Pilots show dirt and mud splatters from wheels



Walkways show dirt and are not uniform



Cab unit "bow wave"



Fuel tank spills represent dirt that sticks to fuel spills



Cab unit "bow wave"



Fuel tank spills represent dirt that sticks to fuel spills



More "bow wave" examples



EL SDP-45 Fuel tank spills



SDP-45 fuel spills seem to be characteristic of the fuel tank design



There is a prototype for everything!



Handrails and brake shoes using "dry brush"



Steam locomotives -
Un-weathered vs. weathered SP MT-4
Model Railroader - August 2002



Variations of units in consists



Finish with protective Testors Dullcoat or equivalent clear flat coating



Be prepared for Murphy's Law



Steam locomotive weathering -
Washes with a medium gray such as reefer gray



Weather drivers while running at slow speed
"Suspend" drivers and connect leads to tender pickups



Use airbrush to simulate effects of boiler scale drips



More information - RMC February 2016



BACK BY REALLY POPULAR DEMAND

The Sunrise Division Auction

Thursday, April 4th is the date

*Holy Love Lutheran Church, 4210 S. Chambers,
Aurora CO 80014 is the place or ZOOM in.*

7pm is the time

We have a new feature this year. In addition to the the valuable but surplus items of Division members that will be available for auction, we will also have donated items.

We ask members who are successful in selling an item to consider donating 10% or whatever amount to the Sunrise Treasury. All the proceeds from the donated items will go to the Sunrise Treasury.

The successful bidder can pay by cash, check or an IOU. IOUs can be paid and the item retrieved at the May 2nd, 2024 meeting.

If you have an interest in one of the donated items but cannot participate in the auction, contact the Auctioneer, Rich Flammini at rmflammini@msn.com and submit your initial bid and your maximum bid.

For members providing an item for auction, you will need to complete a provided official entry form with the following information: Your name, the name of the item and your opening bid price. You may also list a minimum price for the item you would accept once the bidding gets underway.

That's enough detail for now but there will be an opportunity to ask any questions before the Auction begins.

See pictures of the following donated items



Steam Engines
Lionel O27 2-6-4
Bachmann HO Union Pacific 0-6-0 USRA
w/smoke & Vanderbilt Tender



Bachmann Spectrum
ON30 (each in original box)
Colorado & Southern #1002 caboose
Colorado & Southern #1215 box car
NP&S #2004 Christmas gondola



Freight Cars

These are 4 higher quality cars !!!

- TXEX Gunderson Covered Hopper
- Santa Fe Plug Door Reefer
- Great Northern Single Door Wood Box Car
- Undecorated TriLevel Auto Rack Kit* (no couplers)
- * Not assembled



Diesel Engines

There are a variety of engines from Yard Switchers to Bigger Power.

It appears that all of the engines are DC current.

The one unusual livery is the "SF" It is believed that was a potential paint scheme if the purchase of the Southern Pacific occurred. It never happened.