

Sunrise Division Officers

Superintendent.....	William Boorman
Asst. Superintendent.....	Dennis Hagen
Secretary.....	Bob Hochstetter
Treasurer.....	Dave Clifford
Program Chair.....	Gary Myers
Division AP Chair.....	Gerry Meltzer
Youth Coordinator.....	Position open
Education Chair.....	Stewart Jones
Modular Layout Chair.....	Larry Stephens
Herald Editor.....	Bob Hochstetter

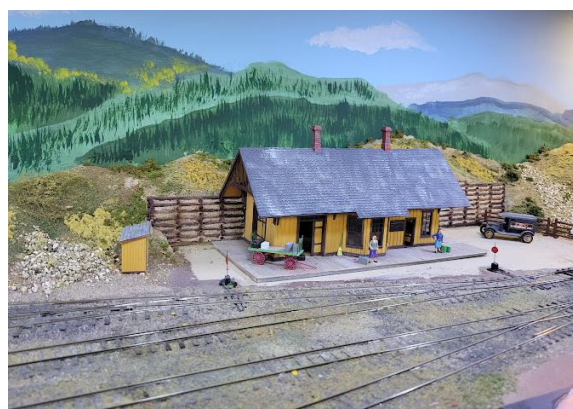
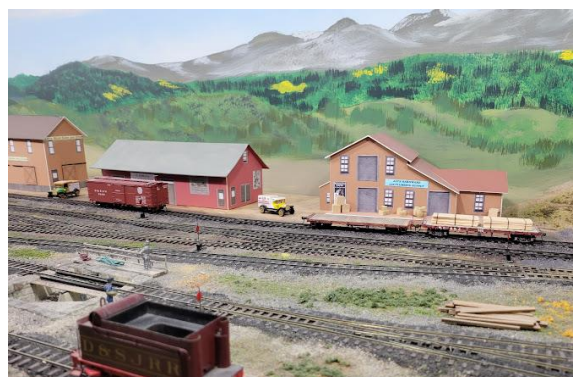
In the Herald

Layout of the Month.....	1
July Meeting Notes.....	2
Next Meeting.....	2
Video of the Month.....	2
Upcoming Tool Time.....	2
Upcoming Clinics.....	2
Upcoming Show 'n' Tell Themes for 2023.....	2
Tool Time.....	4
Module Report.....	2-3
Announcements.....	3
Show 'n' Tell.....	4
Clinic.....	4-11
2023 RMR Annual Convention Information and Registration.....	12-16
North Platte Rail Days Information and Registration.....	17-19

Layout of the Month

This month's three photographs are from Dennis Hagen's Sn3 layout. They were taken by the editor during the Sunrise Division's layout tours on July 22, 2023.

I need photographs for the Herald. If you have photographs of your layout that you would like to have included here, please send them to me. (Ed.)



July Meeting Notes

The regular monthly meeting of the Sunrise Division of the National Model Railroad Association was held July 6, 2023, at Holy Love Lutheran Church. Assistant Superintendent Dennis Hagen called the meeting to order at 7:10. Nineteen members attended in person. Because cell phone contact was lost with Superintendent Boorman who was traveling, connection to the Zoom meeting could not be completed.

Introductions were the first order of business. Along with a self-introduction, Dennis asked each attendee to tell their preferred modeling scale and their most recent modeling efforts.

Announcements, Tool Time, Show 'n' Tell, the Clinic and more followed the self-introductions. All of these are included in this issue of the Herald.

The meeting concluded at 9:00 p.m.

Next Meeting

The next meeting will be Thursday, August 3, 2023, in person at Holy Love Lutheran Church, 4210 S Chambers Road, Aurora, Colorado. The meeting will start at 7:00 p.m. The meeting will also be streamed on Zoom with sign-in between 6:30 and 7:00.

Video of the Month

This month's video features Union Pacific's restored Big Boy #4014 pushing a stalled freight train over a hill.

<https://www.youtube.com/watch?v=8vLWB-P-ehOo>

Upcoming Tool Time

August -- Dave's Favorite Tools—Dave Clifford

Upcoming Clinics for 2023

August – Tracklaying -- Bill Johnson

October – Building Non-Flickering Passenger Car Lighting Circuits for DCC
and

Weathering Techniques for Locomotives—
Bill Botkin

December – My Life Riding the Rails—Rich Flammini

Upcoming Show 'n' Tell Themes for 2023

August – Weathered Model

September – Photos/Media

October – Streetcars/Trolleys

November – Anything Goes

December - Cabooses

Reminder

In an attempt to reduce problems, especially for those who join the meeting on Zoom, we continue to ask that Show 'n' Tell photos, Clinic presentations, and Tool Time photos be taken before the meeting and sent to Gary Myers (garymyers06@comcast.net) for presentation at the meeting and to the editor for inclusion in the Sunrise Herald (rlhoch422@gmail.com). (Ed.)

Tool Time

For this month's Tool Time presentation, Gary Myers did a live demonstration. He showed us, step by step, how to access and read the NMRA Magazine on-line.

Module Report

We are getting ready for the North Platte train show. Rich Flammini, with the help of Bob Rothgery, is painting the viewer side of the modules. Adam and William are doing bridge and track work. Larry is replacing and repairing ballast on a section of several modules that had a mix of different ballasts or that were poorly ballasted in the past. Larry Stephens



New ballast on the modular layout

Announcements

Rio Grande Div. 6, Rocky Mountain Region, National Model Railroad Association



MODEL TRAIN SHOW

BIG OPERATING TRAIN LAYOUTS | **NEW & USED MODEL TRAINS & ACCESSORIES**

FREE Parking!

Saturday, Nov. 11 | 9am-5pm
Sunday, Nov. 12 | 9am-4pm

Balloon Fiesta Park ALBUQUERQUE

Adults \$10 / Kids Under 12 FREE!

railsalongtheriogrande2023.com  

Illustrations Courtesy of RMRTD/NMSL&RHS

SUPERCHARGED - HIGH SPEED - EXTRA POWER

TEXAS EXPRESS

AUGUST 20-26, 2023
Dallas/Fort Worth TEXAS

2023TEXASEXPRESS.COM

 **NMRA National Convention**



July/August Events

Events * Activities

Model RR & Toy Train Swap Meet - The Front Range Model Railroaders Group,
 Green Mountain Presbyterian Church, 12900 W. Alameda Pkwy, Lakewood, CO
 Admission \$3 / Under 16 free. Saturday 9-11:30 AM.

UPHS 2023 Convention - Union Pacific Historical Society,
 Red Lion Pasco Airport & Conference Center, Pasco, Washington

St Cloud 2023 Convention - Great Northern Railway Historical Society,
 Best Western Plus Kelly Inn, 100 4th Ave South, St. Cloud, MN

Events * Activities

North Platte Rail Days
 Golden Spike Tower and Visitor Center, UP Bailey Yard Tours, North Platte, NB

2023 Texas Express - NMRA National Convention
 Gaylord Texan Resort & Convention Center, 1501 Gaylord Trail, Grapevine, TX 76051

Rio Grande Modeling & Historical Society Annual Narrow Gauge Convention -
 Double-Tree by Hilton, Aurora-Denver, CO.
 Registration; \$95

43rd Annual Narrow Gauge Convention - Denver, Colorado
 Crown Plaza Denver Airport, Convention Center, Denver, CO

The Foothills Society of Model Railroaders swap meets
 Green Mountain Presbyterian Church
 12900 W. Alameda Parkway
 Lakewood, CO
 9:00 a.m. -11:30 a.m.
 on the third Saturday of odd numbered months
 (303)989-0087 or (303)985-1491

Show 'n' Tell

This month's Show 'n' Tell segment featured Special Purpose Cars.

Nick Tomlinson presented his unique track cleaning cars.



These are two track cleaning cars for stub end yard tracks and industry spurs. Good pulling locomotives go between them because the two cars have a lot of friction. The cars are box car chassis – 40' and 50'. The 40' one works better on sharp curves because the pad in the middle of the 50' car falls inside the rail on curves less than 24" radius.



The cleaning block on the end is a large block cut to size. The bolt through the arm keeps the arm aligned, and the two screws on the other end of the arm are loose to allow up and down flexing. Weights are old lead type.

Bob Hochstetter presented his N scale test car.



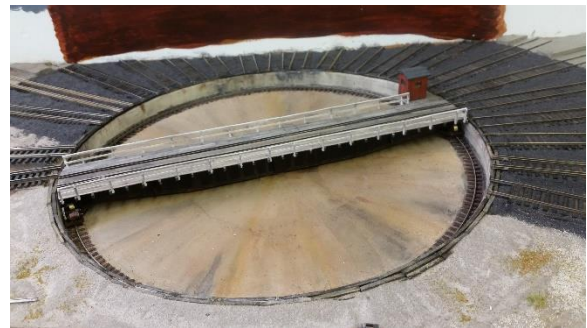
Built in the late 1920's, scale test cars were always to be hauled just in front of the caboose. Immediately upon arrival at the terminal, they were set aside and subjected to a minimum of switching. Under no circumstances were they to be used in switching cars in the train

Clinic

Gary Myers presented the clinic. He described fabricating the dual gauge turntable bridge for the Salida roundhouse and all the documentation that went into submitting it for the Achievement Program. He received a Merit Award for it.

1903 D&RGW Salida, CO
Dual Gauge 100' Turntable Bridge

Construction



The lower portion of the bridge (underneath the ties) is built per the kit directions (105' Diamond Scale Turntable)

Everything from the ties up is scratchbuilt to match a 1930s version of the 1903 Salida CO dual gauge 100' turntable.

Photos of the below deck show little detail, but the basic plate girder style of the kit bridge matches the prototype well.



The basic underframe was assembled from pre-cut sides and spacers.

The ties and long ties were cut from stock and rotated to long width vertical.

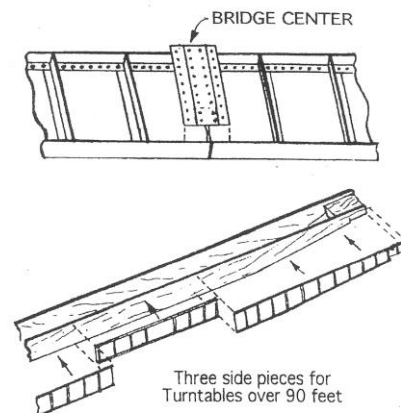
The long ties were cut to length to account for the deck and stanchions, per the plans made from prototype photos (attached).

The tie spacing and number were determined from the prototype.

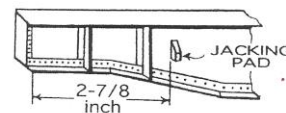
The rails were carefully aligned and centered with the bridge installed in the pit and secured with Pliobond.

BRIDGE SIDE DETAILS:

PLASTIC SIDE PANELS & SPLICE PLATE



JACKING PADS:



These are the Diamond Scale instructions for assembling the girders.

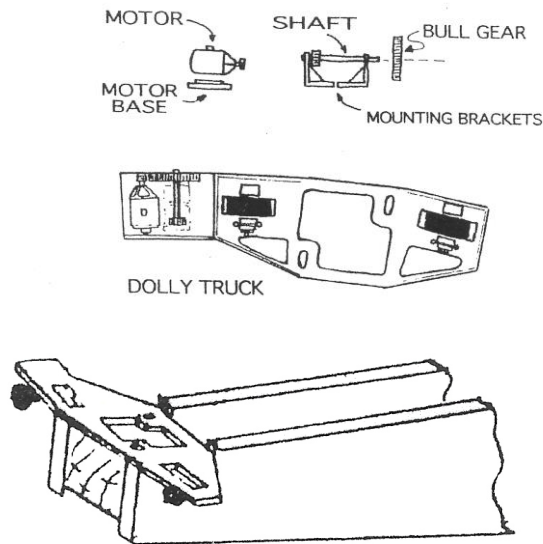
Additional gusset plates were ordered from the manufacturer.



The girders were applied with Pliobond on the kit-supplied, pre-cut side frames.

The pre-cut side frames were wood glued to the interior wood spacers.

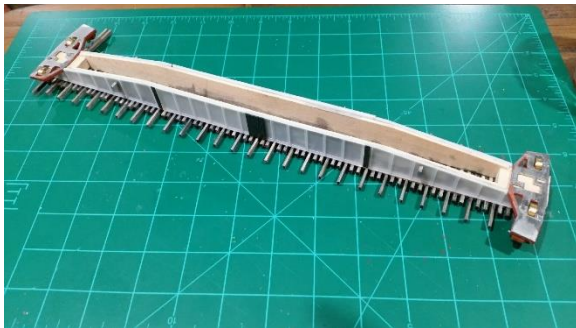
DOLLY TRUCK DETAILS



The dolly trucks were assembled per Diamond Scale kit instructions except the axles were replaced with brass tube stock



Dollies



The dollies were attached using wood screws. Splice plates were cut to cover the plate girder seams between each section and affixed using CA. The kit supplied jack pads were also CA'd in place.



The decking was built board by board, with 2x10 scale lumber primarily. 2x4 boards were placed between the dual gauge rails. The boards adjacent to the rails had to be notched for spikes. Some boards were left intentionally "warped" to show wear. Boards were cut to 20' or shorter.

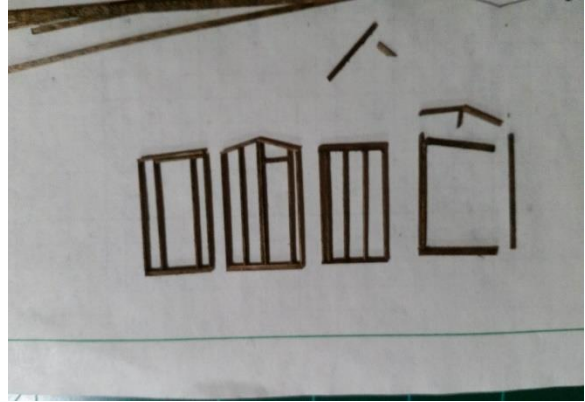


The primary deck was cut from 2x10 stained scale lumber. 2x4 used between rails. The lengths were cut to 16' or 20'. Shorter boards were installed near the ends to replace damaged, worn boards. Some boards

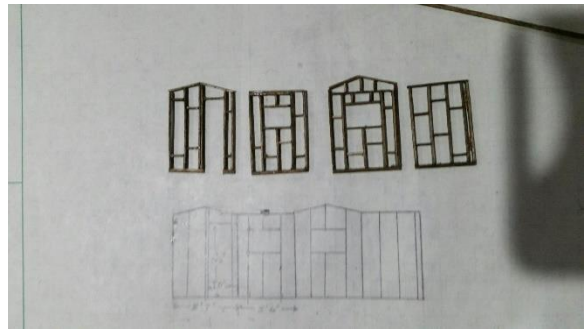
were intentionally mounted to show warpage.



The stanchions were cut to length from 4x6 scale stock and sanded to a 45 deg bevel on top.
Nut-bolt-washers were applied at the base to the tie through drilled hole.
The stanchions were mounted to the left or right side of tie per the photos.

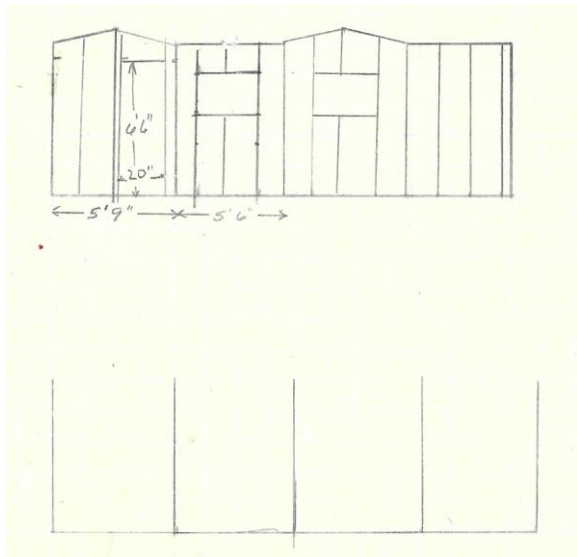


2x4 stock was stained, then cut to length per the drawing, and assembled with CA.

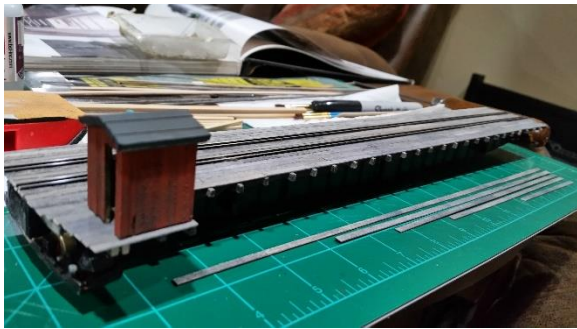


Windows, door frames and lintels were added.





The hand drawn Control Cab Scaled Plan



The control cab fit was checked on the deck prior to the railing installations.



2x6 styrene stock was attached to stanchions with CA.

Cuts were made in the styrene for the appropriate length boards.

Commercial/Kit Details

Under frame

(6) Bridge Plate Girder Sides

(4) Girder Splice Plates

(4) Cast metal Jack Pads

Dolly Assemblies

(2) Motors

(2) Motor Bases

(2) Gear Shafts

(4) Mounting Brackets

(2) Bull Gears

(4) Brass Wheels

Railing

(31) NBWs (stanchion to tie)

Scratchbuilt Details

Roadbed

(56) 9' Bridge Ties

(28) 15' Railing Long Ties

(4) Control Cab Ties

(4) Code 70 MicroEngineering Rails

Decking

(63) 2"x10" Boards

(13) 2"x12" Boards

(7) 2x6 Boards

(39) 2"x4" Boards

Railing

(31) 4x6 support stanchions

(2) railing bottom base board*

(2) railing inside board*

(10) railing cap board*

Control Cab

(37) 2x4 longitudinal & base frame

(5) 2x4 interior frame

(25) 2x4 lintels

(2) glass windows**

(37) 2x8 siding

(7) 2x4 siding

(8) 2x10 roof boards

(5) 3' tar paper strips***

(3) 2x8 Door boards

(5) Door braces*

(1) Interior control box*

NOTE:

All scratchbuilt details are from scale lumber except as noted:

*scale stock styrene

**microscope cover glass

***emery paper

Conformity

This model is designed to replicate the 1903 D&RGW Salida Colorado 100' dual gauge turntable.

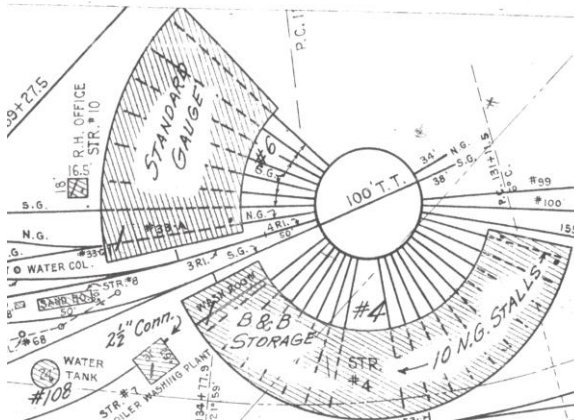
A 105' Diamond Scale Turntable was used to kitbash this model.

Photos of the underside of the deck show little detail, but the basic plate girder style of the kit bridge matches the prototype well.

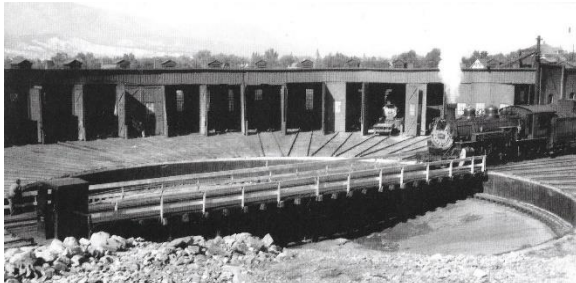
The turntable dollies were used from the kit, as no photographic evidence of the drive mechanisms were found.

The version made is representative of the early 1930s. Only a very few photos were found of this era, but the cab shape, size, and placement are based on a photo (enclosed). Apparently, at least three different control cab designs could be seen in the photographs. Everything from the ties up is scratchbuilt to match a 1930s version of the 1903 Salida CO dual gauge 100' turntable.

The deck width, board widths, railings, cab design, tie and long tie spacing and placement, were all designed based on the photographs, and scaled from the 100' prototype to the 105' kit.



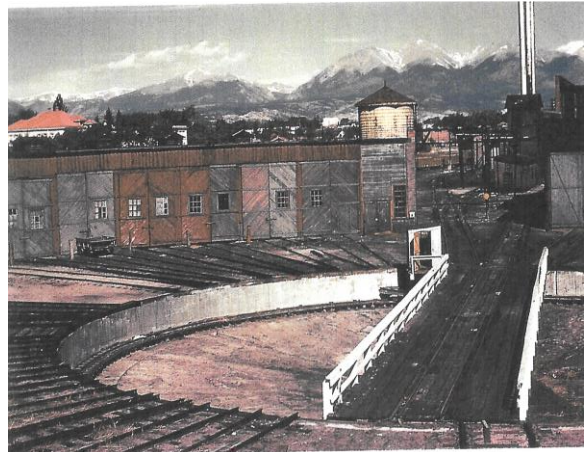
Yard Placement and Scale



Control Cab, Railing, Tie, Girder and Pit Detail



Deck Board Details



Railing Details



Railing Details

Finish & Lettering

The underframe plate girder assembly was hand painted a semi-gloss black, then flat coated, rusted and weathered with Bragdon powders.

The dollies were hand painted a rust primer, then painted black. The gear teeth were filed silver or painted silver where worn. All assemblies were weathered with powders. The roller wheel surfaces were left unpainted for electrical pickup. The decking and all the scale lumber was stained before assembly and lightly weathered with powders. The railings and stanchions were hand painted white and weathered with powders. NBWs on the stanchions to the ties were painted and weathering powders were added. Control cab:

- all wood structure was stained prior to assembly;

- the exterior was painted freight car red and weathered with powders;

- the interior was stained but left unpainted as indicated by the photos;

- lettering – there was no notable lettering on prototype, so none was applied;

- Dullcote was applied to all surfaces, before & after weathering;

Finish & Lettering - Roadbed



The roadbed ties were stained, assembled, and then retouched.

Finish & Lettering - Girders



The girders were hand painted glossy black.

Finish & Lettering – Dollies



The dollies were primed with rust color, on the, non-gear, teeth surfaces.

The brass rolling wheels were left untreated for electrical pickup.

Scratchbuilding

Everything above the girders, including the ties, is scratchbuilt from stock materials such as scale lumber, styrene or glass.


See **DETAILS** for the scratchbuilt parts list.

The deck, railings, and control cab were all scratchbuilt to conform to the photos, with the cab specifically from the 1930s photo.

The ties, railings, long ties to stanchions and decking boards were all spaced to match the photos.

See **CONSTRUCTION** for detailed build.

Contest Judging Form - Construction

 NMRA NATIONAL CONTEST JUDGING FORM NMRA Form #902 Rev. E, 6/16/11 All previous forms obsolete. Please print. Entry Name <u>1903 DERGIN Salida Dual Gauge Turntable Co.</u>		Entry No. <u>15</u>
1. CONSTRUCTION (Maximum 40 points) (*May qualify for AP scratch built) Points Awarded <u>35</u> Model Basis – Select the description that best applies to your model <input checked="" type="checkbox"/> Scratch Built (Complete) – SB struc. + details (>90%) <input type="checkbox"/> Kit Bash – Multi kits/ comm. parts assem. not per kit plan <input checked="" type="checkbox"/> Scratch Built (Partial) – SB struc.; comm. details (<90%) <input type="checkbox"/> Kit Built – Per kit plan (> 90%); few modifications <input type="checkbox"/> Mod. Comm. – Shells, frame, struc. or major parts (>50%) <input type="checkbox"/> Mod. RTR – Some mod. (<20%) to finished comm. model Name kit or major comm. parts & manufacturer <u>Commercial Scale</u> Construction Techniques – Select all methods & materials that apply to your model <input checked="" type="checkbox"/> Drew own plans <input type="checkbox"/> Followed construc. article <input type="checkbox"/> Cut & fit wood <input type="checkbox"/> Soldered metal <input checked="" type="checkbox"/> Used proto/comm. plans <input type="checkbox"/> Cut & fit metal <input type="checkbox"/> Cut & fit cardstock <input type="checkbox"/> Made patterns <input type="checkbox"/> Used kit plans <input type="checkbox"/> Cut & fit plastic <input type="checkbox"/> Cut & fit glass <input type="checkbox"/> Made molds Describe in detail how model was built, its complexity and the methods used. <u>see attached</u>		

Contest Judging Form – Detail, Conformity, Finish & Lettering

2. DETAIL (Maximum 20 points) Points Awarded <u>18</u> Describe complexity, difficulty, refinement & quantity of detail parts added. <u>Identify all commercial parts.</u> <u>see attached. All the detail was commercial and scaled from several photographs of prototype.</u>	
3. CONFORMITY (Maximum 25 points) Points Awarded <u>23</u> Describe prototype design. Include prototype documentation (beyond what may have been supplied in kit). <u>Kit was used for base of prototype model. The water tower portion was scratchbuilt to match prototype. The girder portion was applied to match prototype. Drive rollers were kit used and scaled out to match and prototype information of parts to the drive mechanism. see attached.</u>	
4. FINISH & LETTERING (Maximum 25 points) Points Awarded <u>19</u> <input checked="" type="checkbox"/> Weathered <input type="checkbox"/> Hand Lettered <input type="checkbox"/> Decals <input type="checkbox"/> Dry Transfers <input type="checkbox"/> Spray <input type="checkbox"/> Airbrush <input type="checkbox"/> Dry brush <input type="checkbox"/> Stain <input type="checkbox"/> Non-Weathered – Describe methods & materials <u>Hand painted girders with enamel. All wood pre-stained with water based stain. Stains primed to assembly. All base board painted with acrylic. Baseboard weathering powder and dirt are applied with painting. see attached.</u>	
5. SCRATCH BUILT (Maximum 15 points) - <input type="checkbox"/> Kit Built Classification Points Awarded <u>11</u> List all parts scratch built; note special refinements <u>This structure is 90% scratch built. Detail list scratch parts. Everything above girders, flywheels, drive wheels, control cab, water tower, cut from scale model. Building frame of cut scale lumber and cut scale styrene. see attached.</u>	
6. TOTAL POINTS (Staff only) - Final Score <u>106</u> Tabulated by <u>Gary Myers</u> Verified by <u>Glen</u>	

The National Model Railroad Association, Inc	
	MERIT AWARD This Achievement Program Certificate has been awarded to <u>Gary Myers</u> In recognition of SUPERIOR CRAFTSMANSHIP in the construction of a model in the Structures – Online category "1903 Salida 100' Dual Gauge Turntable" 14 th of May 2022 Date <u>Gary K. Myers</u> Region Achievement Program Manager
 ROCKY MOUNTAIN REGION NATIONAL MODEL RAILROAD ASSOCIATION	 Cheyenne

2023 RMR Annual Convention

RAILS ALONG THE RIO GRANDE



**The 2023 Rocky Mountain Region Convention
Rails Along the Rio Grande, November 10-12, 2023
Albuquerque, New Mexico**

Convention Hotel

Marriott Pyramid North, Albuquerque, NM
505-821-333

<https://marriott.com/abqmc>

Convention Room Rate: \$131/Single

Hotel Link for Special Rate (Ctrl+Click):

<https://www.marriott.com/events/start.mi?id=1683843866138&key=GRP>

Hotel Virtual Tour Link (Ctrl+Click):

<https://www.weselfwalk.com/atrium-marriott-pyramid-albuquerque/virtual-tour>

IMPORTANT DATES

Early Registration
Normal Registration
Late Registration

Convention Hotel Special Rate ends

Contest Forms 901 & 902
Contest Entry & paperwork for NMRA judging
Contest Entry for Popular Vote only

before June 15th
after June 15th
after Sept 15th

before October 13th
due by Nov 1st
due by Noon, Nov 11th
due by 4 PM, Nov 11th

Convention Activities

Friday, November 10

8AM - 11AM	Set up	Gallery Room, Marriott
1PM – 4PM	Model Entry,	Gallery Room, Marriott
6PM – 9PM	Clinics, Model Entry, Refreshments	Gallery Room, Marriott

Saturday, November 11

7AM - 9AM	Breakfast Buffet	Gallery Room, Marriott
8AM – 12PM	Model Entry, Clinics	Gallery Room, Marriott
12PM-1PM	Lunch for Contest Judges	Gallery Room, Marriott
12PM – 4PM	NMRA Contest Judging	Gallery Room, Marriott
6PM – 9PM	Clinics, Model Popular Voting, Refreshments	Gallery Room, Marriott
9AM-5PM	Rails Along the Rio Grande Train Show	Balloon Fiesta Park

Sunday, November 12

7AM - 9AM	Breakfast Buffet	Gallery Room, Marriott
8AM – 9AM	Model Contest Awards	Gallery Room, Marriott
9AM-4PM	Rails Along the Rio Grande Train Show	Balloon Fiesta Park

Full Convention Registration:

Primary \$70 early / \$75 normal / \$80 late
Household Family Member \$45
Non-NMRA Primary Registrant Additional Fee: \$20
includes Saturday & Sunday breakfast buffets
includes Friday & Saturday evening refreshments

1 Day Convention Registration

Primary \$50 early / \$55 normal / \$60 late
Household Family Member \$30
Non-NMRA Primary Registrant Additional Fee: \$20
includes one breakfast buffet includes one evening refreshments

2023 RMR Annual Convention

RAILS ALONG THE RIO GRANDE

Albuquerque, NM November 10-12, 2023

Early Registration Form (Until June 15th)

ATTENDEE	1 Day*	All Days**
Primary	\$50	\$70
Each Household Family Member	\$30	\$45
Non-NMRA Member Primary Additional Fee	<u>\$20</u>	<u>\$20</u>

Total Registration

* includes one breakfast buffet, evening refreshments

** includes two breakfast buffets, two evenings refreshments

Primary + Family (household) members attending: _____

Names (to appear on badges): _____

Local Division: _____

Please circle: 1 Day or All Days

Dates:

Nov 9

Nov 10

Nov 11

Nov 12

Please Circle: Planned Arrival Date

Thurs

Fri

Sat

Sun

Please Circle: Planned Departure Date

Thurs

Fri

Sat

Sun

Please make checks payable to: **Rocky Mountain Region**

Print this page, fill out, and Mail form and check to:

Rocky Mountain Region Convention

c/o Denny Krausman

9609 Silver Hill Cir

Lone Tree, CO 80124-5420

Prices subject to change, registration cost increase after June 15th

Point of Contact: Gary Myers, garymyers06@comcast.net, 720-837-4393
Point of Contact: Denny Krausman, dkrausman@msn.com, 303-880-1879

ALBUQUERQUE, NEW MEXICO

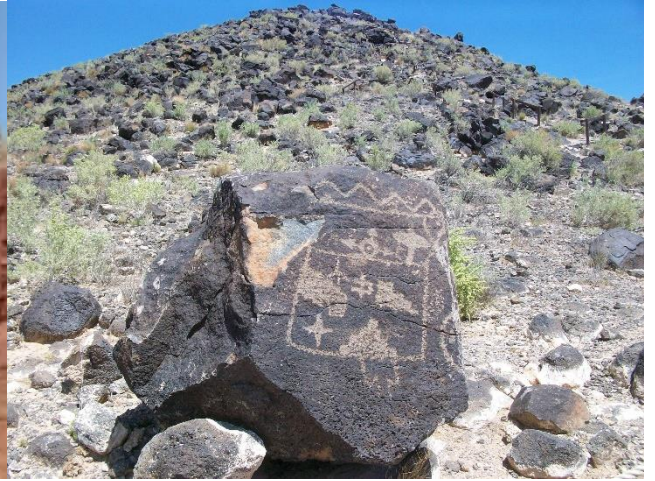


Old Town Albuquerque



AT&SF 2926 Restoration

ALBUQUERQUE, NEW MEXICO



Petroglyph National Monument



Museum of Nuclear Science & History



Sandia Peak Tram



San Felipe de Neri Church

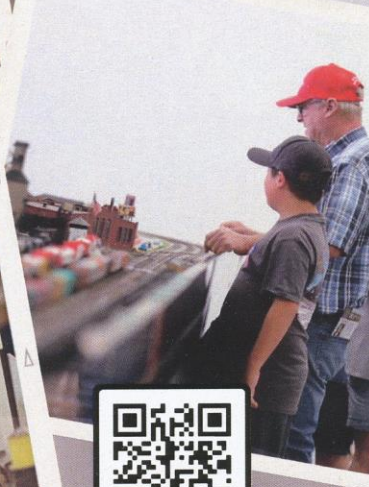
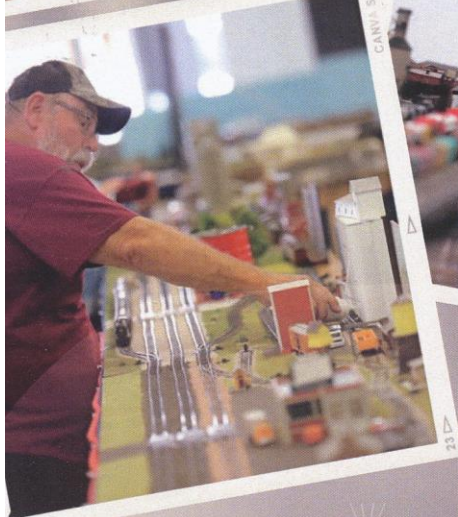
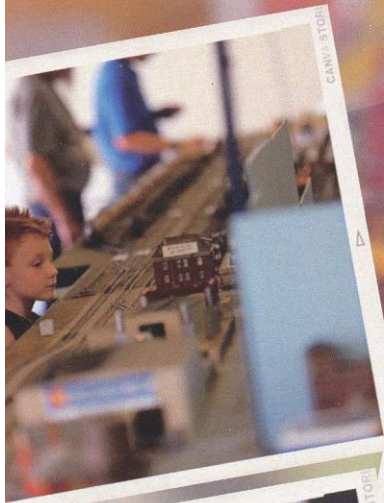


Explora Science Center & Children's Museum

North Platte Rail Days 2023 Model Train Show

Aug 4-6th, 2023

D&N Event Center
(501 E Walker Rd North Platte, NE)



SCAN ME



LAYOUT REGISTRATION

D & N Event Center
(501 East Walker Rd, North Platte, NE 69101
AUG 4-6, 2023)
FRIDAY & SATURDAY 9:00-5:00PM
SUNDAY, 9:00AM-3:00PM



LIMITED SPACE; FIRST COME, FIRST SERVED*

- ★ **\$300 STIPEND FOR CLUB, IF RESERVED BY JUNE 1ST***
\$200 FOR THOSE WHO RESERVE JUNE 2ND-JULY 15TH. TO BE PAID VIA CHECK ON SUNDAY OF SHOW
- ★ **FREE RAIL DAYS T-SHIRT & EVENT TRADING PIN FOR ALL LAYOUT VOLUNTEERS IN ATTENDANCE, IF RESERVED BY JUNE 1ST***
- ★ **FREE DINNER THURSDAY NIGHT, DURING SET UP AT SHOW**
- ★ **BAILEY YARD BUS TOUR, FRIDAY NIGHT, 6PM (LIMIT 52)**
- ★ **FREE ADMISSION TO THE GOLDEN SPIKE TOWER (Thrs-Mon)**
- ★ **25% OFF MERCHANDISE AT THE GOLDEN SPIKE TOWER**
- ★ **FREE DONUTS & COFFEE, SATURDAY MORNING, AT SHOW**
- ★ **FREE PANCAKE BREAKFAST, SUNDAY MORNING, AT SHOW**
- ★ **FREE ICE CREAM SOCIAL, SUNDAY AFTERNOON, AT THE SHOW**

LAYOUT PRIZE DRAWINGS - WIN UP TO \$250 !!!!

Name of Layout or Group:	Address:
Contact Name:	
Phone:	Email:

# of Layout Volunteers attending:	Event size t-shirts, request for layout volunteers: Small: Medium: Large: XL: 2XL: 3XL:	Estimate time of arrival:
-----------------------------------	---	---------------------------

LAYOUT INFO

Please include any barriers and/or ropes in descriptions. Include a sketch, if necessary.

DIMENSIONS: x **# OF TABLE REQUEST, INSIDE OF LAYOUT:**

SHAPE: **ELECTRICAL REQUIREMENTS:**

i.e. Rectangle, Oval, Square. ISA Standard or other

COMMENTS/NOTES:

CONTACT: GENE TACEY (308) 386-2489 TACEYS@GPCOM.NET
Mail: Golden Spike Tower 1249 N Homestead Rd, North Platte, NE 69101



Hours

Friday, August 4th
Saturday, August 5th
9:00am-5:00pm

Sunday, August 5th
9:00am-3:00pm



Admission

Adults..... \$5.00
Youth (6-12) \$1.00
Ages 5 & ↓ Free

FREE with North Platte
Rail Days VIP Badge



Things to See & Do

Operating model railroads in multiple scales
Vendors selling model railroad items & memorabilia

Information & Education including:
"How to get started in model railroading"
"Tips & Tricks to displays"
"Model Railroading 101"



For the Kids

Lil' Spike Kids Play Zone
Scavenger Hunt
Color Station
& More!



Sunday's Special Events

Pancake Feed
9:00am-11:00am

Ice Cream Social
1:00-3:00pm

with admission



For more information

Golden Spike Tower
1249 N Homestead Rd
North Platte, NE 69101
(308) 532-9920
info@GoldenSpikeTower.com

The Golden Spike Tower is an equal opportunity employer & provider.