



Sunrise Herald

November 2021 Volume 14, Number 11

Sunrise Division Officers

Superintendent.....William Boorman
 Asst. Superintendent.....Dennis Hagen
 Secretary.....Bob Hochstetter
 Treasurer.....Rich Flammini
 Program Chair.....Gary Myers
 Division AP Chair.....Bob Rothgery
 Youth Coordinator.....Ernee Edwards
 Education Chair.....Stewart Jones
 Modular Layout Chair.....Larry Stephens
 Herald Editor.....Bob Hochstetter

In the Herald

Layout of the Month.....	1
From the Editor.....	2
November Meeting Notes.....	2
Next Meeting.....	2
URL of the Month.....	2
Upcoming Mini-Clinics.....	2
Upcoming Tool Time.....	2
Upcoming Show 'n' Tell Theme for 2021.....	2
Announcements.....	2
Show 'n' Tell.....	2-5
Tool Time.....	5-6
Mini-Clinics.....	6-12
For Sale.....	12
Swap Meets and Ads.....	13-15

Layout of the Month

This month's photographs are from the late Don Deuell's HO scale layout.



Rich Flammini at Don's layout

From the Editor

The Sunrise Division had its third in-person meeting at Holy Love Lutheran Church since COVID-19 restrictions were eased. This was also a hybrid meeting with approximately twenty percent of the participants streaming on Zoom. Again there were quite a few streaming glitches and complaints by Zoom participants that they could not hear those speaking. Our Superintendent has assured us that he is working to correct these problems.

The election of officers took place at the meeting. All of the current officers agreed to continue in their posts for another year and were unanimously elected.

It was decided at the meeting that 10% of the selling price of For Sale items will be donated to the Sunrise Division.

In an attempt to reduce problems, we are again asking that Show 'n' Tell photos, clinic presentations, and Tool Time photos be taken before the meeting and sent to Gary Myers (garymyers06@comcast.net) for presentation at the meeting and to me for inclusion in the Sunrise Herald (rlhoch422@gmail.com).

November Meeting Notes

Signing in to the hybrid meeting began about 6:45 p.m. November 4, 2021. The meeting began at 7:00 p.m. with 17 participants in attendance at the church and 4 attending via Zoom. The meeting began with Announcements followed by Tool Time, Show 'n' Tell, and the Clinic, all of which are reported on in greater detail in this edition. The meeting concluded at 8:48 p.m.

Next Meeting

The next meeting will be Thursday, December 2, 2021 in person at Holy Love Lutheran Church, 4210 S Chambers Road, Aurora, Colorado. Mask wearing is required for all attendees. The meeting will start at 7:00 p.m. The meeting will also be streamed on Zoom.

URL of the Month

Goose Fest 2012- Turn-Table Action—RGS
Galloping Geese at the Colorado Railroad
Museum
<https://www.youtube.com/watch?v=rJQjTBVwtME>

Upcoming Clinic

Track Improvement Ideas for Operations—Gary Myers

Upcoming Tool Time

December – Making Custom Scale Rulers—Stu Jones

Upcoming Show 'n' Tell Theme for 2021

December – Snow is the Season

Announcements

Larry Stephens reported that he has completed all of the structural work on the modules and will complete the scenery work in the next 2-3 weeks.

Rocky Mountain Train Show, November 27 and 28, 2021 (See flyer below)

Show 'n' Tell

November's Show 'n' Tell subject was Maintenance of Way.

Larry Stephens Larry presented his MOW UP train consisting of rotary snow blower, engine, crane tool car, crane, crane caboose, box car, tank car, rail car, tie car, ballast car, gondola, tool car and combine car (kitchen and bunk). Two of his MOW cars are animated using DCC, the snow blower blade spins both to the left and right. The chute is reversible to be in sync with the blade. The crane cab rotates, the boom goes up and down and the cable goes up and down. The caboose lamps can display red, green, amber and blue.



Adam Crews showed his “work in progress” MOW train.



UP Ex:CNW 9666 that pulls the work train

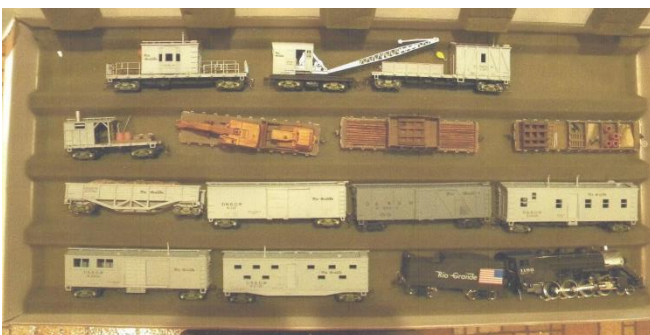


UP track cleaning boxcar which will soon be repainted into the UP green color behind a sleeping workman in the CAT 320D



The tie flat car which doubles as the camera car for layouts and a UP Ford hi-rail truck in front with a worker enjoying a hot beverage

Dick Hunter showed this Walther's Rio Grande Work Train Set. It includes 13 cars: a crane and tender; equipment, storage, and bunk cars; and an IHC 2-8-0 Rio Grande loco which is equipped with a non-sound decoder. (For Sale-see below.)



Gondola loaded with the CAT 315CL backhoe, scrap & broken ties, and extra attachments for the CAT M323F hi-rail



CAT M323F hi-rail with tie grabber

This Dimi-Trains crew car is the first N-scale kit that I assembled 40 years ago. It represents a double sheath boxcar converted to work crew service by the addition of windows and the replacement of the side door with a person door and a ladder.

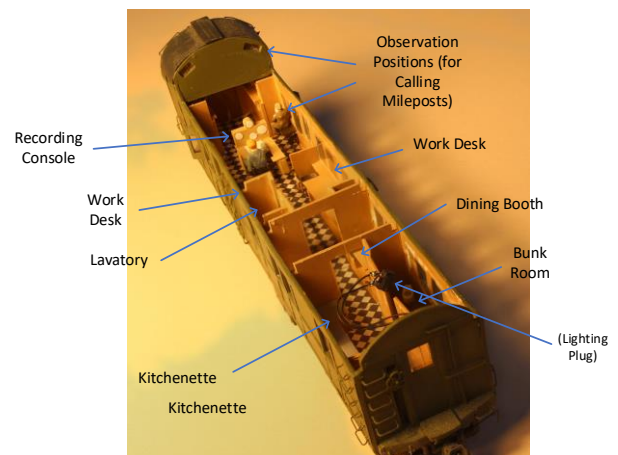


Stu Jones presented his dynamometer car

Stu states "This is a model of a Southern Pacific Dynamometer Car. Such cars were essential to enable railroads to measure the tractive effort of locomotives, but also measured many other performance characteristics, such as speed, gradients, and water and fuel consumption. The car had observation windows where a crew member could call out mileposts for the console operator to record on the strip charts. One car was sufficient for any railroad and therefore they were rare. Only large railroads had them, but they could be leased to smaller clients. Each railroad designed their own car, so no two were alike. I have presumed that the SP car survived at least into the 1960s, since they would have been quite useful for evaluating new diesels that were coming onto the market then, but I cannot verify this. However, I suspect they were primarily used to evaluate steam locomotives. The crew was specially trained to

make the measurements and probably travelled with the car. The on-board living quarters provided their accommodation while travelling on assignments. I am unaware if any kits or RTR models were ever produced, so any model would have to be scratchbuilt.

An article appeared in the July 1944 Model Railroader with drawings. You can refer there for more information, if you can locate the article."



Special Show 'n' Tell from the October meeting.

Charles Sullivan sent pictures from his 1940's Märklin Sk2 World War 2 set.

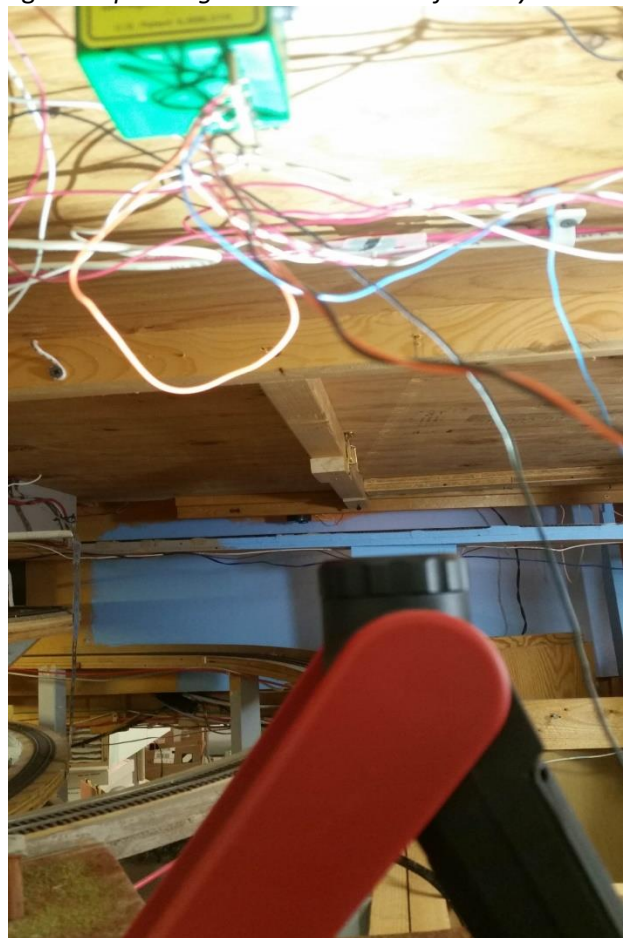


Tool Time

Gary Myers showed this incredibly bright portable work light.



These photos demonstrate the versatility of the light. *pointing at the underside of the layout*



and pointing down at the track.



Powerful 700 lumens of Pure Beam Focus
 Enables placement anywhere
 Magnet in Base



**COAST
 PM300 Pro-
 Mount PIVOT
 LIGHT**

Home Depot

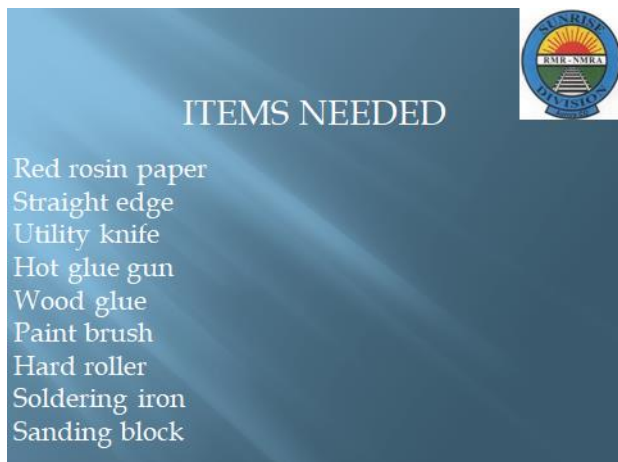
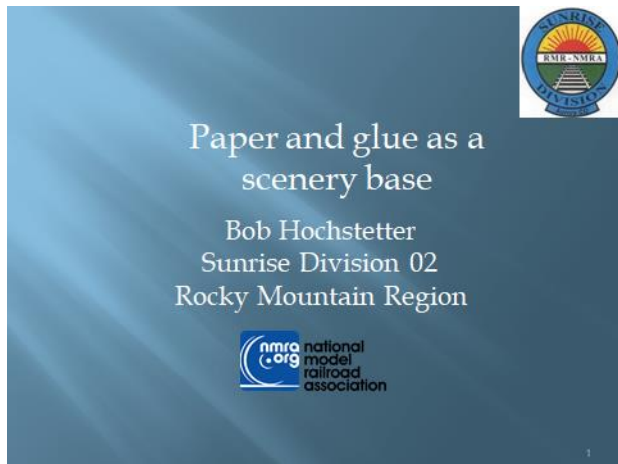
\$19.97



Red rosin paper \$15 from Home Depot 3' x 166'

Mini-Clinics

I presented these two mini-clinics as neither is long enough for a full one-hour clinic. Both PowerPoint presentations are included here in their entireties as they are self-explanatory.

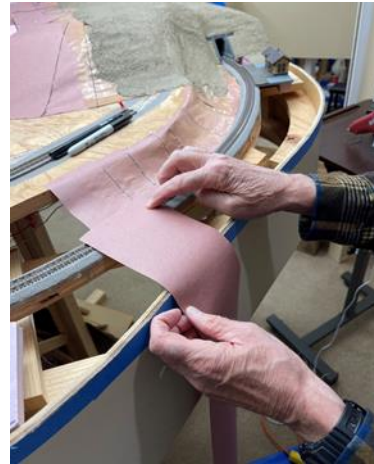




hot glue gun



sanding
block



estimate length
of piece needed



soldering iron with the tip removed



approximately
 $\frac{1}{2}$ inch fold



4 inch wide
strip of paper



apply hot glue
to fold





place the hot glued,
folded edge against
the subroadbed



apply hot glue to
fascia edge



roll the edge against
the subroadbed



roll the paper onto
the hot glue



fold the paper down
and mark the area to
be glued on the
fascia edge



if necessary,
run a hot
soldering iron
over the paper
to smooth
it out



trim the excess paper
by running the coarse
sanding block at a
45 degree angle to
the fascia edge



apply a layer of glue
to the paper

after 24 hours apply
a second layer



glued in place



paper overlapped
and hot glued as
indicated

an example of the
finished paper
forming a ditch
next to the roadbed



pour wood glue into
a disposable container



it provides a tough,
strong base on
which to put, dirt,
grass, rocks, etc.



also can be used to form hills/ mountains, using wadded newspaper, paper and masking tape, scrap foam, etc. as a substructure

Materials

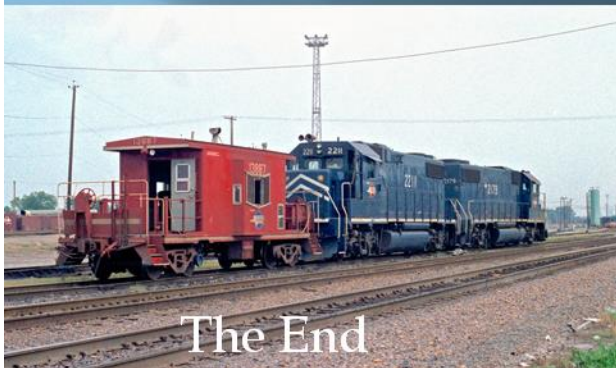
CelluClay
vermiculite
flat acrylic paint
wood glue

putty knife/ spatula/ artist's palette knife/ etc.

food grinder/ mini-chopper.



Questions?



The End



vermiculite

hydrous phyllosilicate material

8 quarts \$5 from the garden section of Home Depot

Clean Dirt

Bob Hochstetter
Sunrise Division 02
Rocky Mountain Region



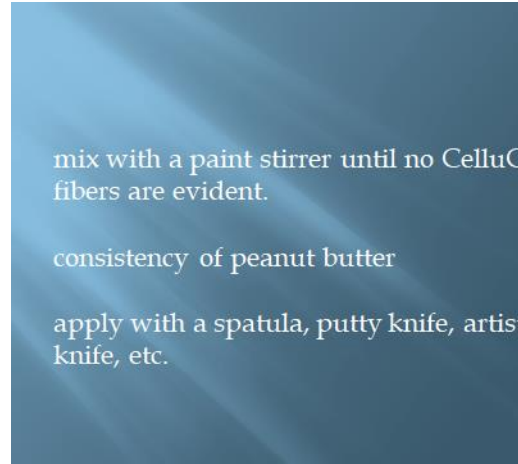
CelluClay

A very fine, instant papier mâché

5 pounds/ \$30
Michaels



Wood glue
\$17/ gallon
Home Depot



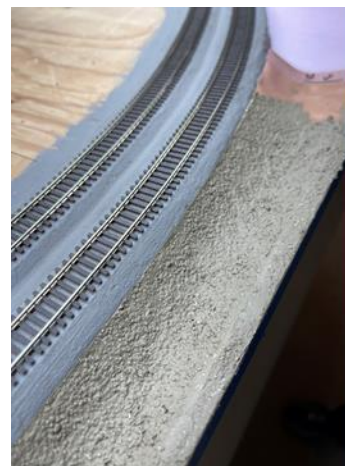
mix with a paint stirrer until no CelluClay fibers are evident.

consistency of peanut butter

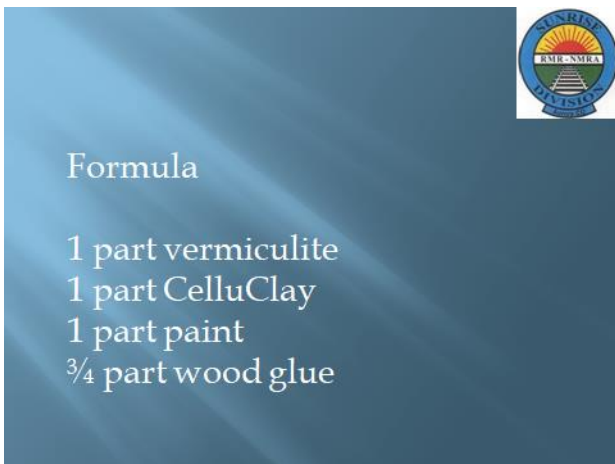
apply with a spatula, putty knife, artist knife, etc.



flat acrylic paint
cheapest you can find
dirt color

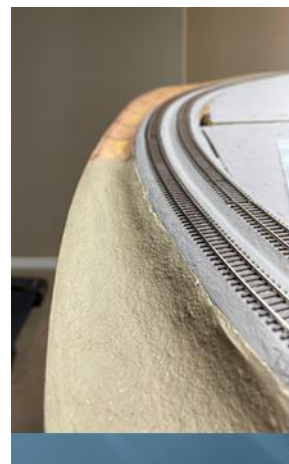


after setting
coarse surface



Formula

1 part vermiculite
1 part CelluClay
1 part paint
 $\frac{3}{4}$ part wood glue



smooth surface after running the vermiculite through a food grinder (\$2 garage sale purchase)





FOR SALE



Walther's Rio Grande Work Train Set. 13 cars including crane and tender, equipment, storage, and bunk cars. IHC 2-8-0 Rio Grande loco has DCC but no sound.

This set ran well on our modules. It may need a few minor repairs. Some extra detail castings are included.

This set is up for sale. Ten percent of the selling price will go to Sunrise Division to help with trailer repair costs. I will accept offers for the whole set or just the cars or locomotive. Dick Hunter – hunterrl@ecentral.com – Use **work train** in subject block.





Rocky Mountain Train Show

[Mission](#)[About Us](#)[Log In](#)[Contact Us](#)[Home](#)

Upcoming Shows

[Rocky Mountain Train Show - Holiday 2021](#)[Rocky Mountain Train Show - Spring 2022](#)

Rocky Mountain Train Show - Holiday 2021

Rocky Mountain Train Show - Holiday 2021

November 27th & 28th
Sat 9:00 AM - 5:00 PM
Sun 9:00 AM - 3:00 PM

The Ranch Events Complex
5280 Arena Circle
Loveland, CO 80538

Exhibit Areas
Center Hall, North Exhibition Hall,
South Exhibition Hall

[Directions and Parking](#)
[Table Map](#)
[Vendor List](#)
[Boy Scout Merit Badge](#)
[Accommodations](#)
[Sell or Exhibit at the Show](#)

[Click Here
For Tickets](#)

Planning



We donate to the following organizations in the form of tickets to the show and/or monetary giving



**GOOD NEWS RE-INTRODUCING
MONTHLY SPRINGS MODEL TRAIN
SWAP MEET**

HOSTED BY ROYS MODEL TRAIN STORE

CHAPEL HILLS MALL

1710 BRIARGATE BLVD

COLORADO SPRINGS CO Phone: 719-229-9580

Vendor Set up Friday Noon

FREE Public Admission

Friday Public 2pm-6pm

Saturday Public 10am to 4pm

FREE PUBLIC ADMISSION

2021 Dates: Aug13-Sep10-Oct8-Nov12-Dec10

Vendor Tables Available \$20 per table

You can book same tables for each show

Tables with table Cloths & Chairs

For more info contact Roy

Aviationhistory@comcast.net 719-229-9580

Roy's Model Trains

We Sell-Buy-Trade Model Trains all Scales

We buy collections large & small

New Address, New Expanded Store

Chapel Hills Mall

1710 Briargate Blvd Suite #0487

Colorado Springs, CO 80920

2nd Floor above Dick's - Follow the Signs

New Hours of Operation

Mon-Fri 12-6pm Sat 11am-5pm Sun 12:30-4p.m.

(Not Open Sundays July-September 2021)

NEW WEBSITE SOON

Roy'smodeltrains.com

Email: aviationhistory@comcast.net

Phone: 719-728-0503 Leave Message.

COME VISIT US SOON!!

Watch for monthly Swap Meets





That awkward moment when your Wife finds
your real model train collection...