



# Sunrise Herald

September 2021    Volume 14, Number 9

## Sunrise Division Officers

Superintendent.....William Boorman  
 Asst. Superintendent.....Dennis Hagen  
 Secretary.....Bob Hochstetter  
 Treasurer.....Rich Flammini  
 Program Chair.....Gary Myers  
 Division AP Chair.....Bob Rothgery  
 Youth Coordinator.....Ernee Edwards  
 Education Chair.....Stewart Jones  
 Modular Layout Chair.....Larry Stephens  
 Herald Editor.....Bob Hochstetter

## In the Herald

Layout of the Month.....	1
From the Editor.....	2
September Meeting Notes.....	2
Next Meeting.....	2
URL of the Month.....	2
Upcoming Mini-Clinic.....	2
Upcoming Tool Time.....	2
Upcoming Show 'n' Tell Themes for 2021.....	2
Announcements.....	2
Show 'n' Tell.....	2-3
Tool Time.....	4-5
Clinic.....	6
For sale.....	6
Train show announcements.....	7-8
Track Side Photos.....	9-11
Response.....	12
Message from the Treasurer.....	12

## Layout of the Month

This month's photos were taken by Larry Stephens at Tom Wilcox's outdoor layout during his recent open house.



### From the Editor

Well, it finally happened.

The Sunrise Division had its first in-person meeting at Holy Love Lutheran Church in eighteen months. This was a hybrid meeting with approximately one-third of the participants streaming on Zoom. While there were a few glitches, all things considered it was a success and may envisage how future meetings are conducted. With a geographical division as large as the Sunrise Division, many hope that streaming continues into the future for those who live far from the church.

### September Meeting Notes

Signing in to the hybrid meeting began at 6:30 p.m. September 2, 2021. The meeting began at 7:13 p.m. with 15 participants in attendance at the church and 7 attending via Zoom. The meeting began with Announcements followed by Tool Time, Show 'n' Tell, and the Clinic, all of which are reported on in greater detail in this edition. The meeting concluded at 9:00 p.m.

### Next Meeting

The next meeting will be Thursday, October 7, 2021 in person at Holy Love Lutheran Church, 4210 S Chambers Road, Aurora, Colorado. Mask wearing is required for all attendees. The meeting will start at 7:00 p.m. The meeting will also be streamed on Zoom.

### URL of the Month

<https://www.youtube.com/watch?v=cfxmBEqMLRw> this video has some great views of the Georgetown Loop Railroad from 2006

### Upcoming Mini-Clinic

Paper and glue as a scenery base—Bob Hochstetter

### Upcoming Tool Time

T Pins as a tool—Rich Flammini

### Upcoming Show 'n' Tell Themes for 2021

**October** – Covered Hoppers

**November** – Maintenance of Way

**December** – Snow is the Season

### Announcements

Larry Stephens announced that he has now repaired all but four of the modules.

TECO Model Train Show, Colorado Springs  
November 13 & 14, 2021

Santa Fe Modelers

Denver Area Mini-Meet

October 9, 2021

All modelers welcome, free registration

### Show 'n' Tell

September's Show 'n' Tell subject was Roundhouse/Turntable.

Bill Johnson brought this old Suydam kit roundhouse. The kit requires gluing and soldering to complete. Bill hopes to include the roundhouse in a new layout.



Dennis Hagen showed pictures of his turntable via Zoom. It is an HO model that he converted to Sn3.

He included the following notes:

"I got the basic idea several years ago, probably through an article in *Model Railroader* possibly written by Eric Lundberg, but I am not sure on that.

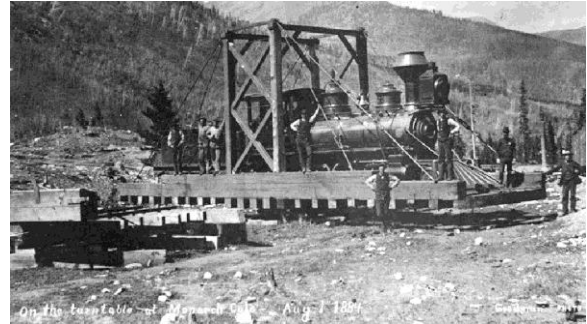


The author converted an Atlas turntable to HO<sub>n</sub>3. I realized that the same techniques could be used to convert to Sn3, On3, On30 or even for a back-dated HO standard gauge. I put a decoder on the Atlas motor, so I could use my regular throttle to run the turntable, but the signature “start and stop” indexing on the Atlas mechanism bothered me. I finally disassembled the turntable and took all of the gears out. This left me with a very smooth “Armstrong” style turntable that I can turn manually.

It would be more prototypical to add details like the ring rail and to raise the turntable bridge up on a center pivot, but I just wanted to get them operating, so I cut some corners.”



And this is the photograph that inspired his model:



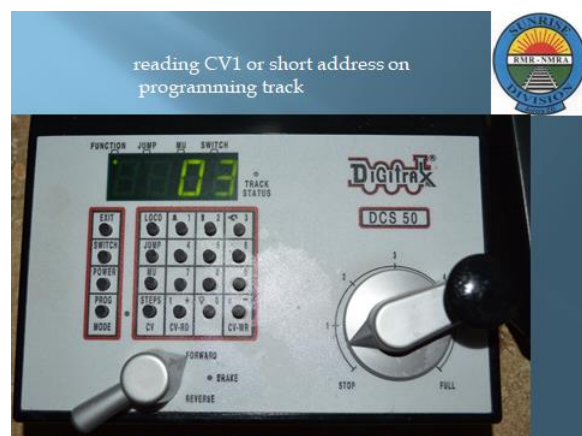
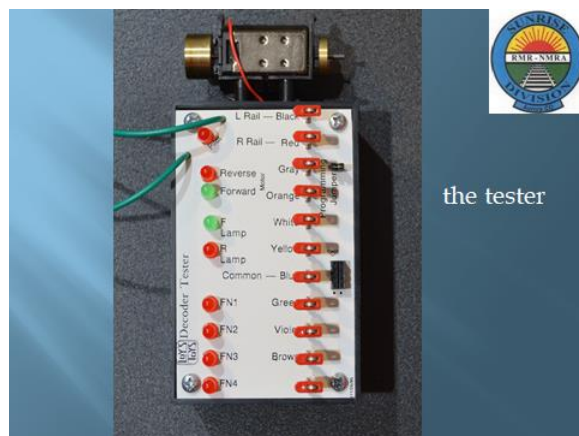
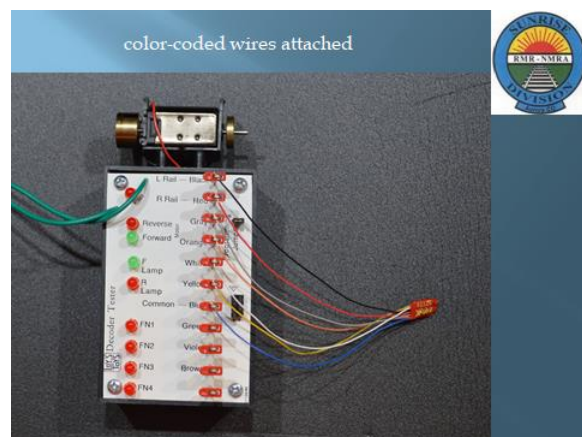
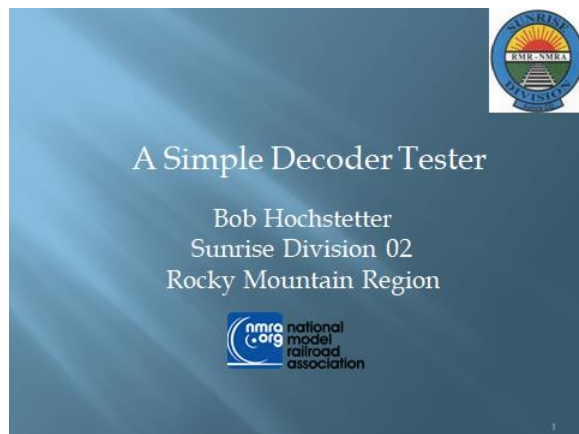
Stu Jones showed his turntable via Zoom.



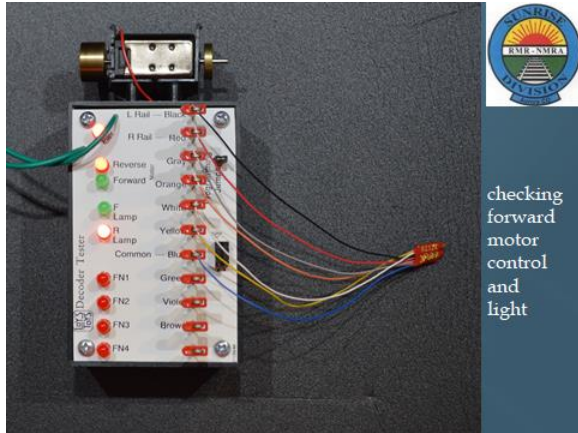
Stu noted this about his turntable: “I scratch built it from drawings in *Model Railroader*, August 1962, however, the pit is from a Walther's kit. For many years it was not operable, but I had a friend who purchased a number of phonographs at a government auction. They were originally destined for *Recordings for the Blind* and were surplus. I talked him out of one that he stacked in his garage. He died a few years ago and I think the remainder was still stacked in his garage. I disassembled the unit and salvaged the added, it turns flawlessly. Unfortunately the drive mechanism is not easily visible for photographing.” record table for the drive unit and coupled it to the turntable with a pivot made from threaded tubing made for lamps. I attached a motor that I had obtained years earlier and with a few electronic components

## Tool Time

For the Tool Time portion of the meeting, I presented these PowerPoint slides:



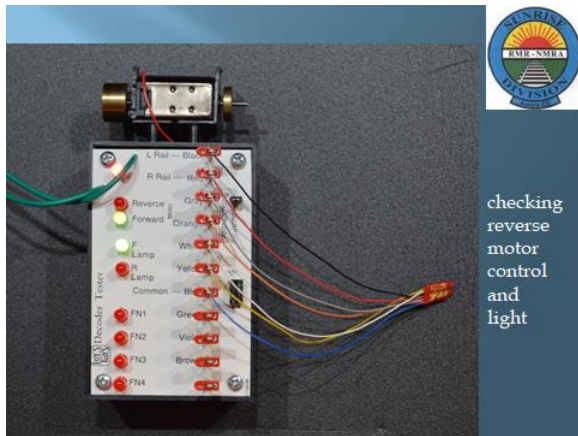




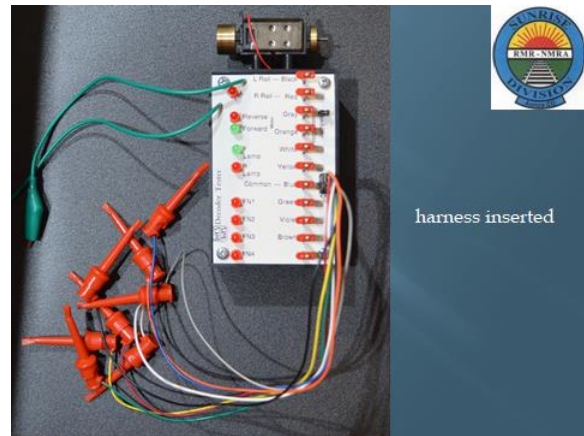
checking forward motor control and light



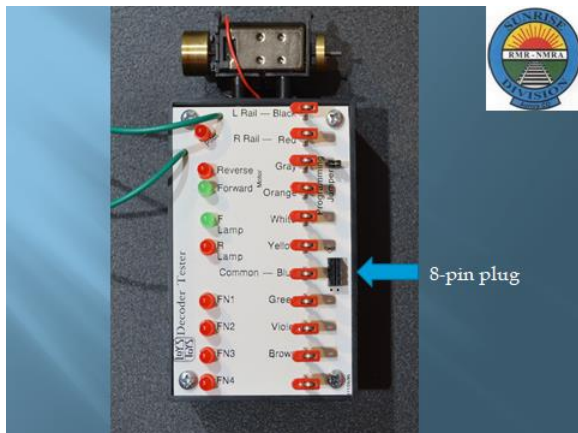
8-pin plug harness



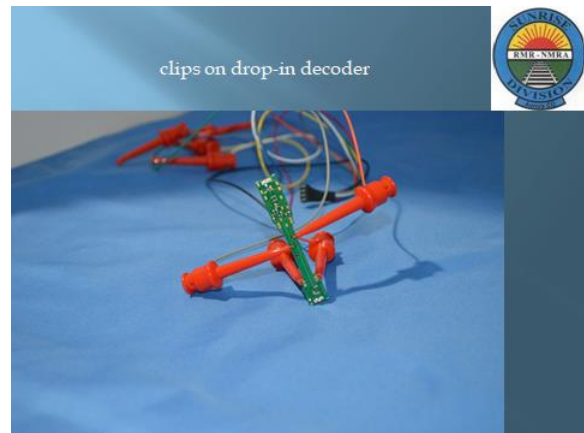
checking reverse motor control and light



harness inserted



8-pin plug



clips on drop-in decoder

## Clinic

William Boorman presented an introduction and overview of JMRI, the Java Model Railroad Interface.

JMRI is an open source program for model railroad hobbyists that allows users to control their railroads from computers.

According to the JMRI website: "JMRI is intended as a jumping-off point for hobbyists who want to control their layouts with a computer without having to create an entire system from scratch.

You can manage your locomotive rosters and easily program your decoders using **DecoderPro®**.

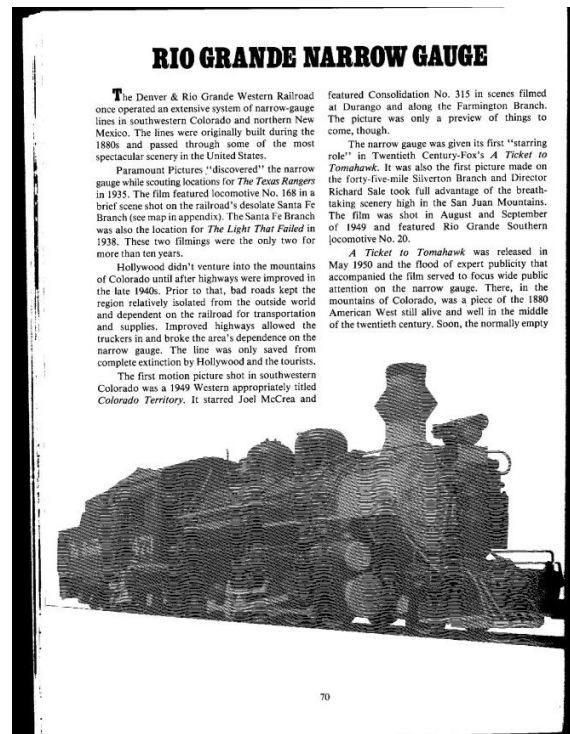
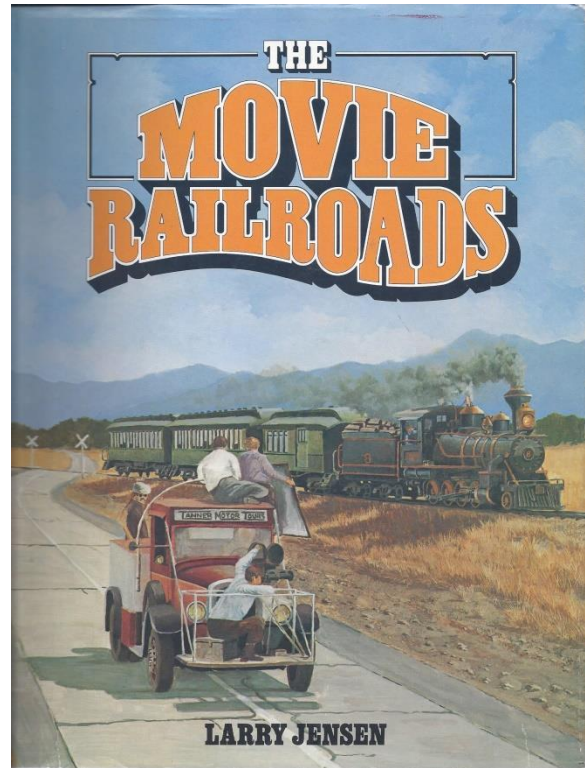
You can build control panels and control your layout using **PanelPro™** to set up signaling and other functions.

**OperationsPro™** lets you create manifests that route cars across your railroad from shipper to receiver, and provide train crews with operating instructions.

Going beyond the basics, you can use **Logix** to automate your layout's behavior, interface with X10 and Insteon systems to control your layout room's lights and write scripts to extend the capabilities of the system."

## Book for sale

"The Movie Railroads" by Larry Jensen. This hard cover book is 8 1/2" X 11", with 257 pages. It has many photos taken from movies made on 10 different railroads. The Rio Grande Narrow Gauge has 26 pages. I will take the highest offer of at least \$50. Send offer to [hunterrl@central.com](mailto:hunterrl@central.com). Please make subject "book sale".





# **SANTA FE MODELERS**



**Denver Area Mini-Meet  
All Modelers Welcome**

**Saturday October 9<sup>th</sup>, 2021 9:00 AM to 1:00 PM**

Lone Tree Library  
10055 Library Way, Lone Tree, CO 80124

Presentations by: Marshall Hancock – Canyon Diablo Bridge, The Model



Joe McMillan – Highlights From His Newest Book  
Denny Krausman – Researching and Modeling Boxcars  
1955 to 1970

**Coffee & Donuts  
Door Prizes**

Registration opens at 9:00 AM, Program Begins at 9:30 AM

**Registration is FREE**

For more information, contact Denny Krausman (303) 880-1879  
[dkrausman@msn.com](mailto:dkrausman@msn.com)



# MODEL TRAIN SHOW



## Railroad People

**November 13-14, 2021**  
**Sat 10-5 Sun 10-4**

**Chapel Hills Mall**  
**1710 Briargate Blvd**  
**Colorado Springs, CO 80920**

**\$7 per person**  
**Children under 12 free**  
**Senior/Military \$1**  
**Discount**



Info and online ticket sales at [www.tecoshow.org](http://www.tecoshow.org)



# Track Side Photos

by Larry Stephens

I found the Tennessee Pass tunnel by accident. As I am a rail fan beside doing HO, I don't know why I never before searched out this tunnel. It is off of US highway 24 that runs between Leadville and Dowd's Junction at I70. It is a throwback to the 50s/60s, narrow shoulders and curves. It is a nice scenic drive and also has Camp Hale for your military buffs. It also has an iconic (The Green Bridge) auto bridge.

Unfortunately, the south portal has been vandalized, mostly for its copper.



Looking to the South



Block Signals-South Portal

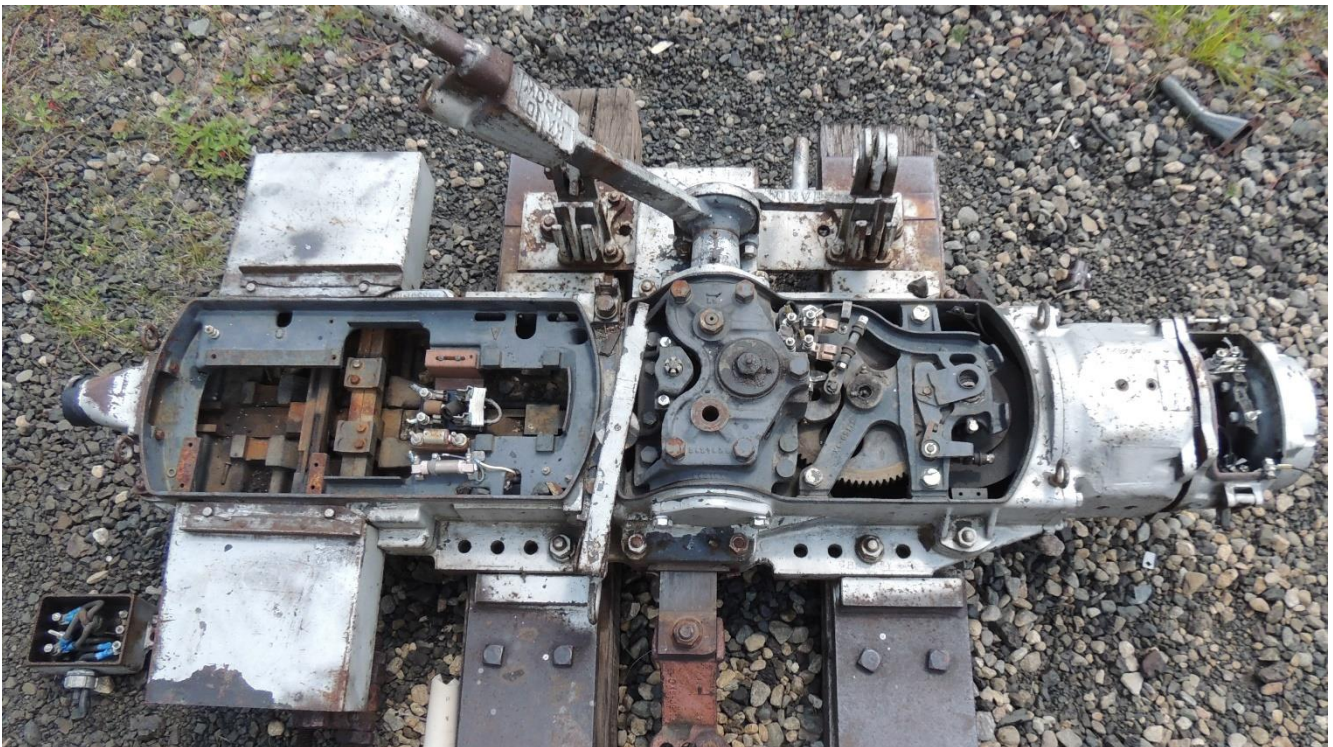




South Portal Entrance



View from the tunnel facing south.



The remains of a switch machine.



The remains of an eletrical box.



The Green Bridge



The auto road under the bridge goes to Red Cliff.  
The train tracks are the Tennessee pass route.



## Response

Radford Walker sent the following in response to the article in the April edition of the Herald.

Ha! Concerning the forgotten sense, Mr. Imagination Russ T. Rayles obviously was asleep in the 1980s, as he does not remember Olfactory Airts (TM). All the scents he speaks of were available for use on layouts, and are still on eBay from time to time. Don't know how many there were originally, but I have a pretty good set (photo below). Those I know I am missing are fresh cut grass, burning wood, and fresh cut wood. Those never produced that I wanted were spring rain on cement, alpine meadow, swamp, and blowing dust/dirt. The cattle manure was used for one of the best practical jokes of all time when coupled with a Broadway Limited sound stock car that I magically converted into a sound and scent car. Anyway I guess the April fool's joke is on him, as it is no joke at all.



### **A Message from our Treasurer, Rich Flammini Grand Re-opening Sunrise Surplus Store**

Now that we are back meeting live at the Holy Love Church, we can re-open the store. If you have any quality surplus model railroad items, any scale, donate them. Since we are all in some stage of building a layout, this is a good way to pick up what you need at a bargain price. Actually the price is up to you as the cost is a donation to the Sunrise Division. It is our second source of funds. Of course the first is from exhibiting our module layout at Train Shows. But shows have been non-existent due to COVID. So bring your surplus and bring your cash or checkbook to pick up bargains.