

### Sunrise Division Officers

Superintendent.....William Boorman  
 Asst. Superintendent.....Dennis Hagen  
 Secretary.....Bob Hochstetter  
 Treasurer.....Rich Flammini  
 Program Chair.....Gary Myers  
 Division AP Chair.....Bob Rothgery  
 Youth Coordinator.....Ernee Edwards  
 Education Chair.....Stewart Jones  
 Modular Layout Chair.....Larry Stephens  
 Herald Editor.....Bob Hochstetter

### In the Herald

Layout of the Month.....	1
From the Editor.....	1
February Meeting Notes.....	2
Next Meeting.....	2
URL(s) of the Month.....	2
Upcoming Clinics for 2021.....	2
Upcoming Tool Times for 2021.....	2
Upcoming Show 'n' Tell Themes for 2021.....	2
Financial Report.....	2
Tool Time.....	3 and 4
Show 'n' Tell.....	5 through 11

### From the Editor

As you read this edition of the Herald, you will learn that our February Division meeting was not ordinary. I hope that you enjoy all of the layout plans in this issue and encourage you to participate in the Show 'n' Tell next month. Even if you do not have a layout yet, show us your flatcar and /or load

and let us know why it is of interest for you (e.g., it was a gift, it's the railroad I model, I got it at a garage sale, etc.). Trust me, we would like to see it. And when you do, please remember to send a picture of it (jpg or pdf) to William Boorman ([caspienkronos@yahoo.com](mailto:caspienkronos@yahoo.com)) and to me ([rlhoch422@gmail.com](mailto:rlhoch422@gmail.com)).

### Layout of the Month



Stewart Jones' Boreas & Saguache

## February's Meeting Notes

February's virtual Zoom meeting was held on February 4, 2021. Superintendent Boorman opened the Zoom app at 6:30 p.m. to allow everyone to connect online and to check audio and visual capabilities. The meeting started promptly at 7:00 with self-introductions by the 23 participants. Next, Rich Flammini presented the end of the year financial statement. Following that, for Tool Time, Larry Stephens gave an excellent presentation on cartridge adhesives used on foamboard. A condensed version of his presentation is printed in this newsletter. Lastly was Show 'n' Tell. This month's subject was track plans. These track plans turned out to be so interesting and informative that by the time that Show 'n' Tell was through, there was insufficient time for the scheduled clinic. The meeting concluded at 9:00.

## Next Meeting

All future Division meetings will be via Zoom until the COVID-19 guidelines allow us back into Holy Love Lutheran Church.

The next meeting will be Thursday, March 4, 2021. Log-in starts at 6:30pm. The meeting will start at 7pm.

## URL of the Month

This month's URLs are courtesy of Randy Lee. They are for downloadable pdf files of HO, S and O scale license plates for your personal use. Please do not share the URLs with others. Also note that Highlands Station, LLC listed on each sheet is no longer in business and that the website is closed.

<https://www.denverhomodelrrclub.org/Documents/HO%20Scale%20License%20Plates.pdf>

<https://www.denverhomodelrrclub.org/Documents/S%20Scale%20License%20Plates.pdf>

<https://www.denverhomodelrrclub.org/Documents/O%20Scale%20License%20Plates.pdf>

## Upcoming Clinics for 2021

**March**—A Brief History of American Refrigerator Transit (A.R.T.) – Gary Myers

**April**—DCC Wiring Diagrams – Frank Labor

## Upcoming Tool Times for 2021

**March**—Layout Scenic Lighting –  
Rich Flammini

## Upcoming Show 'n' Tell themes for 2021

**March** – Flat Cars/Loads

**April** – April Fools

**May** – Re-Purposed Kit/Project

**June** – Passenger Rolling Stock

**July** – Depot

**August** – Scratchbuilt Model

**September** – Roundhouse/Turntable

**October** – Covered Hoppers

**November** – Maintenance of Way

**December** – Snow is the Season

## Financial Report

Rich Flammini reported that the Division started the year with a balance of \$2,307.46 and ended the year with a balance of \$2,163.93. There was very little activity this year. The major expenditures were a \$100 contribution to Holy Love church and \$49.52 for the renewal of the trailer license. There was a little income from the TCA show in February and from donations from the swap table.

## Tool Time

Larry Stephens gave his Tool Time presentation on cartridge adhesives and guns. He researched these to find the best adhesives for repairing the Sunrise Division's layout modules. The following slides are only of a few of the slides that he shared during the meeting:

### Cartridge Adhesive Used on Foamboard

There are four listed from Loctite and the best for modules and fixed layouts is not one of them.

The following four adhesives are recommended by Loctite for FoamBoard.

Loctite PL 300 Adhesive.  
Polyseamseal White All-Purpose Adhesive.  
Loctite Power Grab Adhesive.  
Loctite PL Premium® Polyurethane Adhesive

Loctite PL 300 and Loctite Power Grab Express are latex. Latex comes out as a bead and has a gap filling attribute. It is not intended to be squeezed thin as it will have a slower curing time. If spread thin then curing time is ok, such as holding down track.

Loctite PL Premium® Polyurethane requires gloves and long sleeves as it can irritate your skin. Polyurethane is just too messy to work with.

Loctite Polyseamseal is a PVA adhesive. Is it the one to use?

What is the Best Cartridge Adhesive for Our Layouts?

Loctite PL 375 Heavy Duty Off-White Multi-Purpose Construction Adhesive, PL 200 and Polyseamseal would also work but Polyseamseal is hard to find.

Why?

Let's start with the PL 375, in that it is half the cost of other adhesives. That's always a great reason. Water and weather-resistant once cured. For indoor and outdoor use. Water-based for low odor and easy clean up.

What makes it better for our use

It is a paste with a base of (PVA), the same base used in Titebond which is (PVA). (Poly Vinyl Acetate) It spreads like thick Titebond. PL 375 cleans up as easy as Titebond.

Why Not Use Latex Adhesive?

Latex adhesive is tacky, sticks to anything it touches. Not too easy to clean up. It uses it tack to hold in place foamboard. It is meant to fill gaps between foamboard and framing. It is meant to hold only the weight of the foamboard which is why it failed on the modules.



### Considerations on using any adhesive on Foamboard

Both sides are slick due to the foamboard being extruded. PL 375, like Titebond, likes porous material. The surface of the foamboard needs to be roughed up with about a 60 grit sand paper.

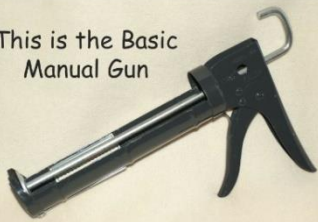
### Cartridge Guns

They come in manual, semi automatic, and automatic.  
And before you ask what caliber.....

### The Manual Gun

Engage the teeth, squeeze the amount of adhesive you need. When you are done, disengage the rod from the teeth by rotating the rod 180 degrees or you will have an inch or two of adhesive placed at the end of the nozzle.

This is the Basic Manual Gun



### The Semi Auto Gun

When you're done applying the bead of adhesive, release the trigger and press the lever.  
It will release the pressure.

This is what I call the Semi Auto Gun



### The Auto Gun

This one will have a couple of levers and springs that when you release the trigger it will automatically release the pressure.

This is what I call the Auto Gun



### Which one is better?

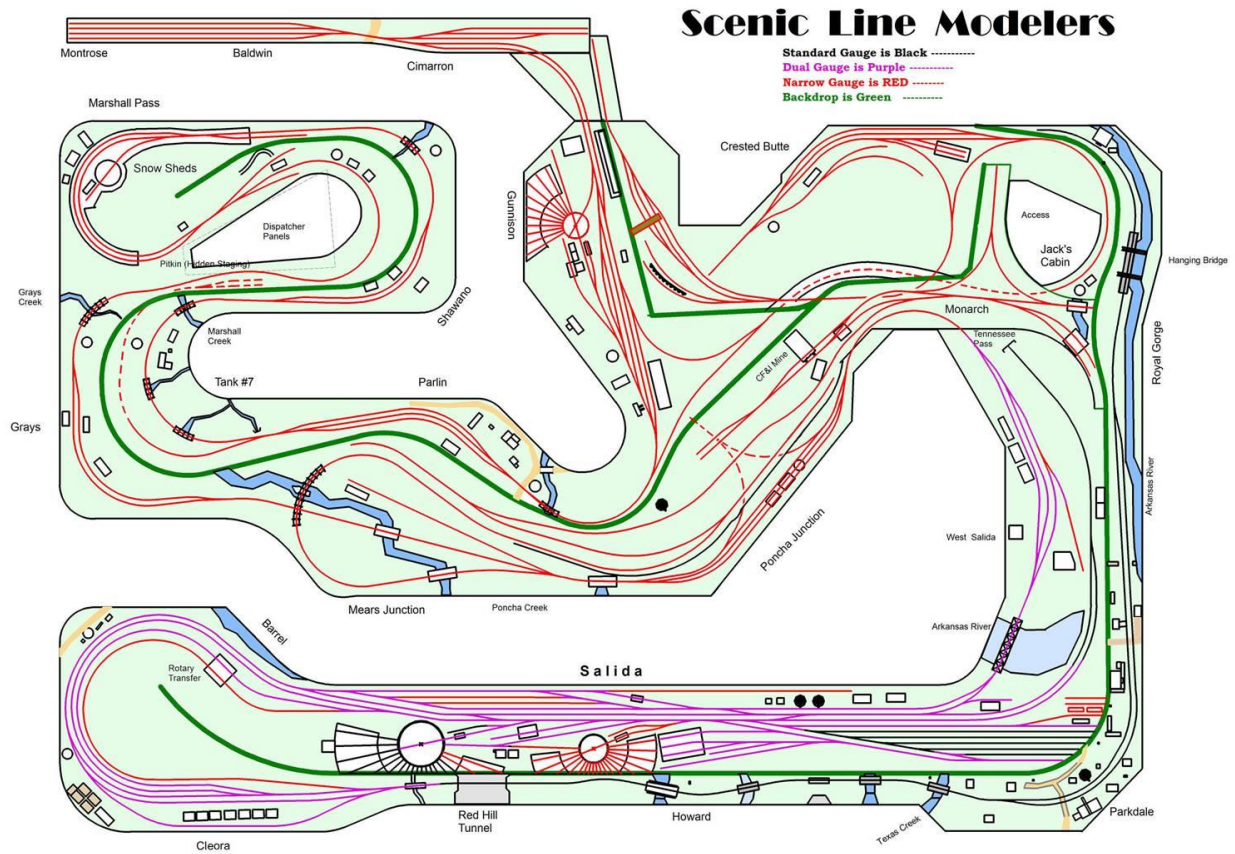
It depends on the project.  
If you are applying just a drop of adhesive the automatic one is better.  
If you are applying a long bead that requires many squeezes, The semi automatic will allow for a better continuous bead.  
You need them both!

### Bonus

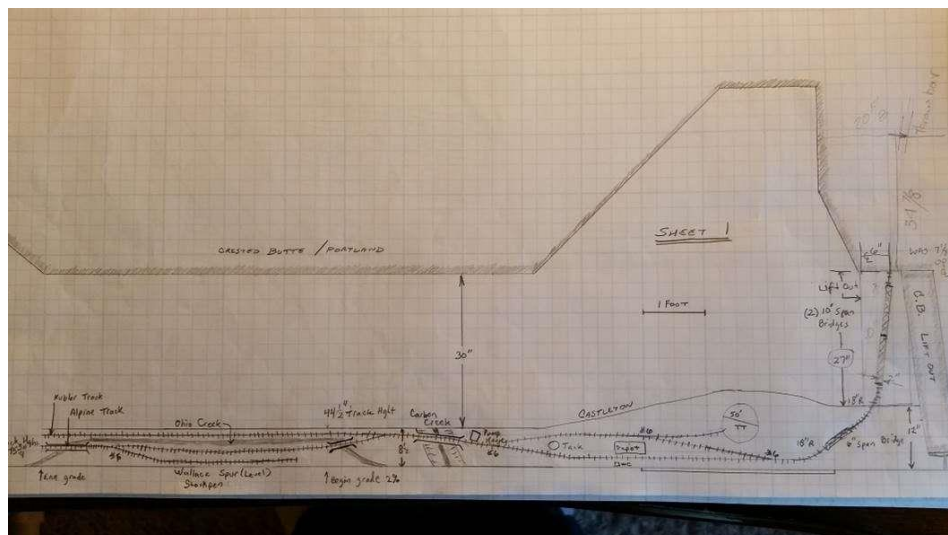
Which Titebond should you use?  
Titebond original: Indoors, save your money.  
Titebond II: Outdoors or exposed to weather extremes.  
Titebond III: Outdoors, it's nearly water proof, but it is not as good as Titebond II for weather extremes.

## Show 'n' Tell

Gary Myers began Show 'n' Tell with this plan from the Scenic Line Modelers layout:

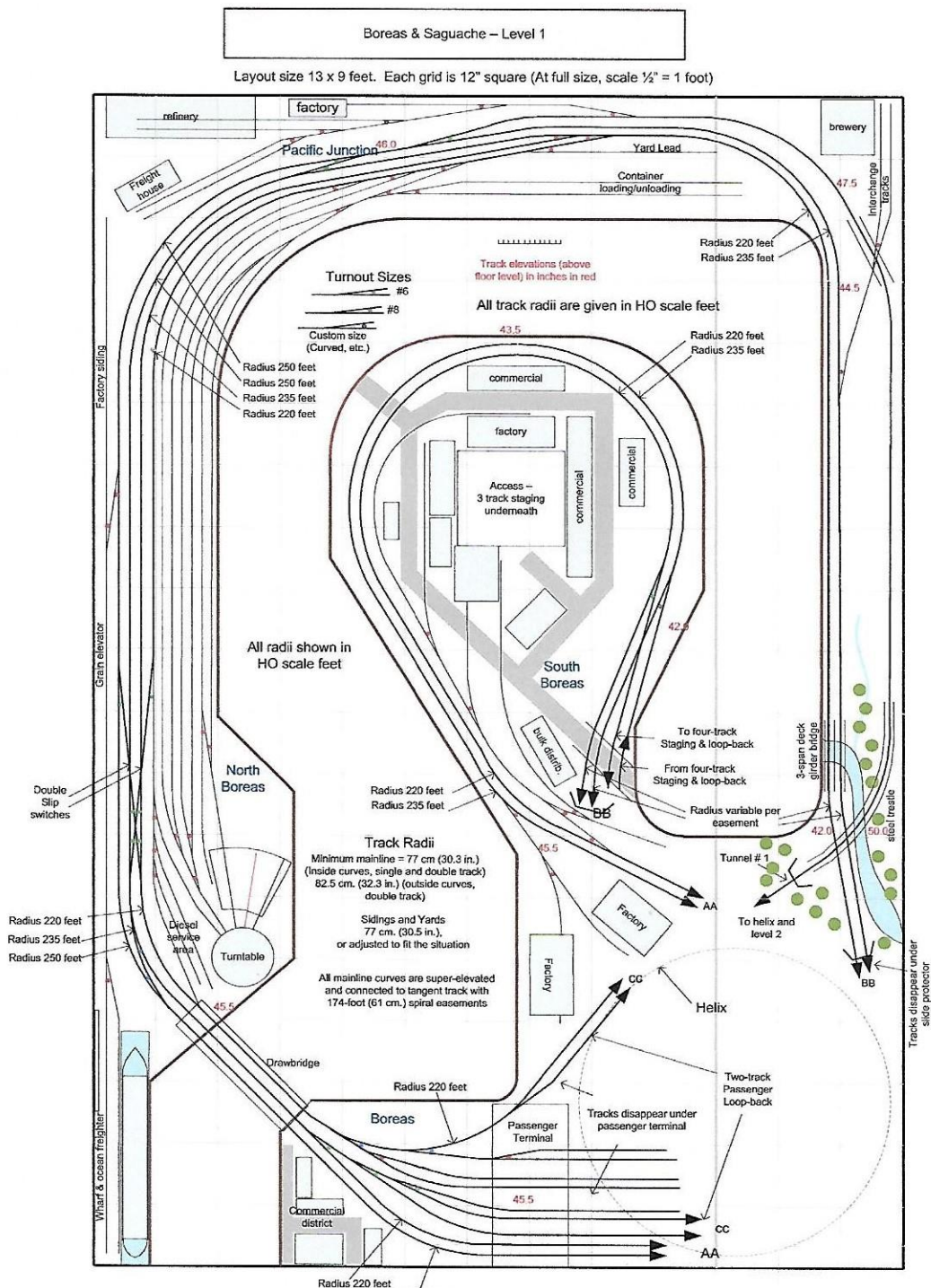


He then showed several rough sketches of a proposed branch line and explained how he uses these before beginning construction. This is one:



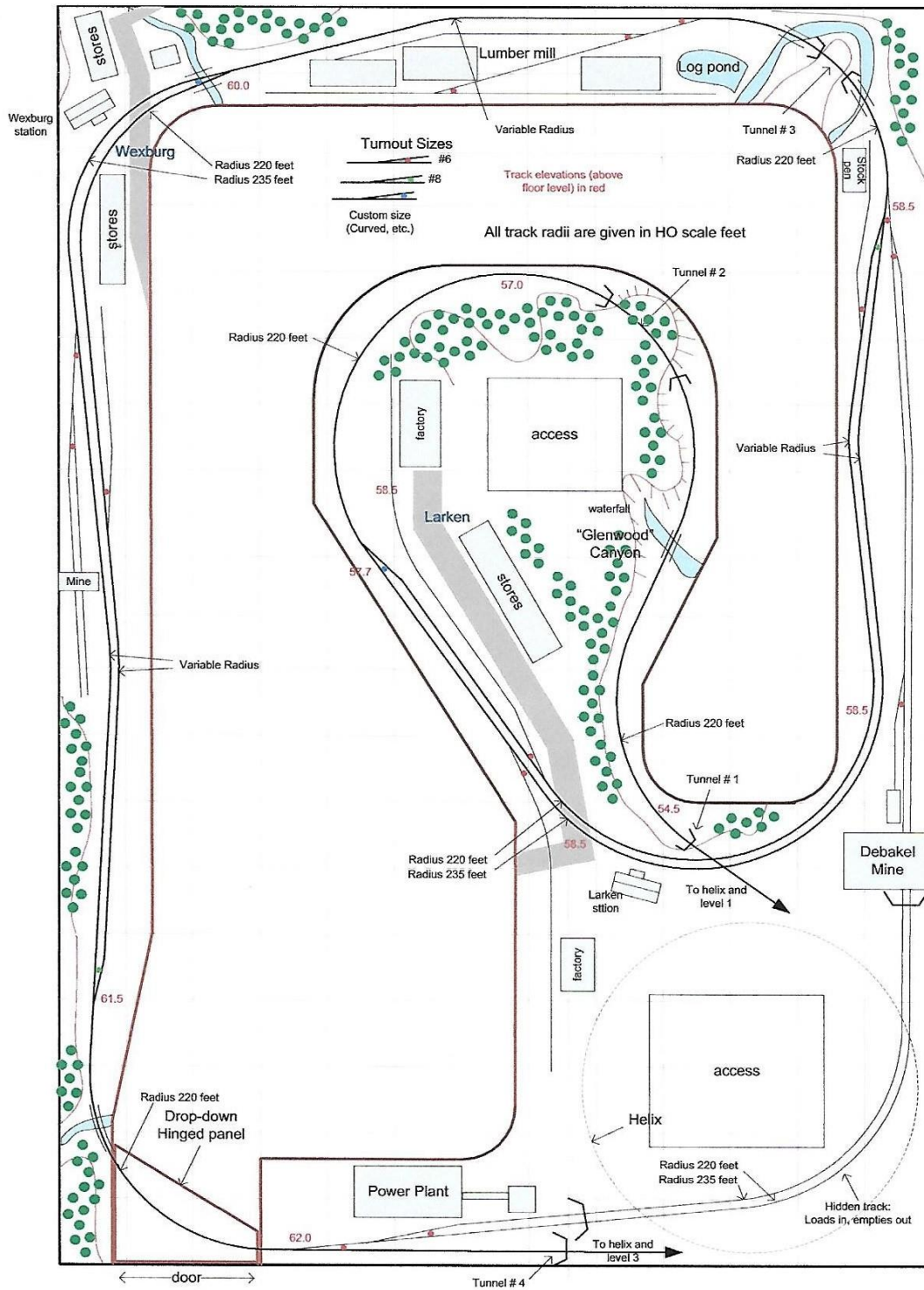


Stewart Jones presented the plans for his three level layout and described its evolution from a single level around the walls layout to this current one.



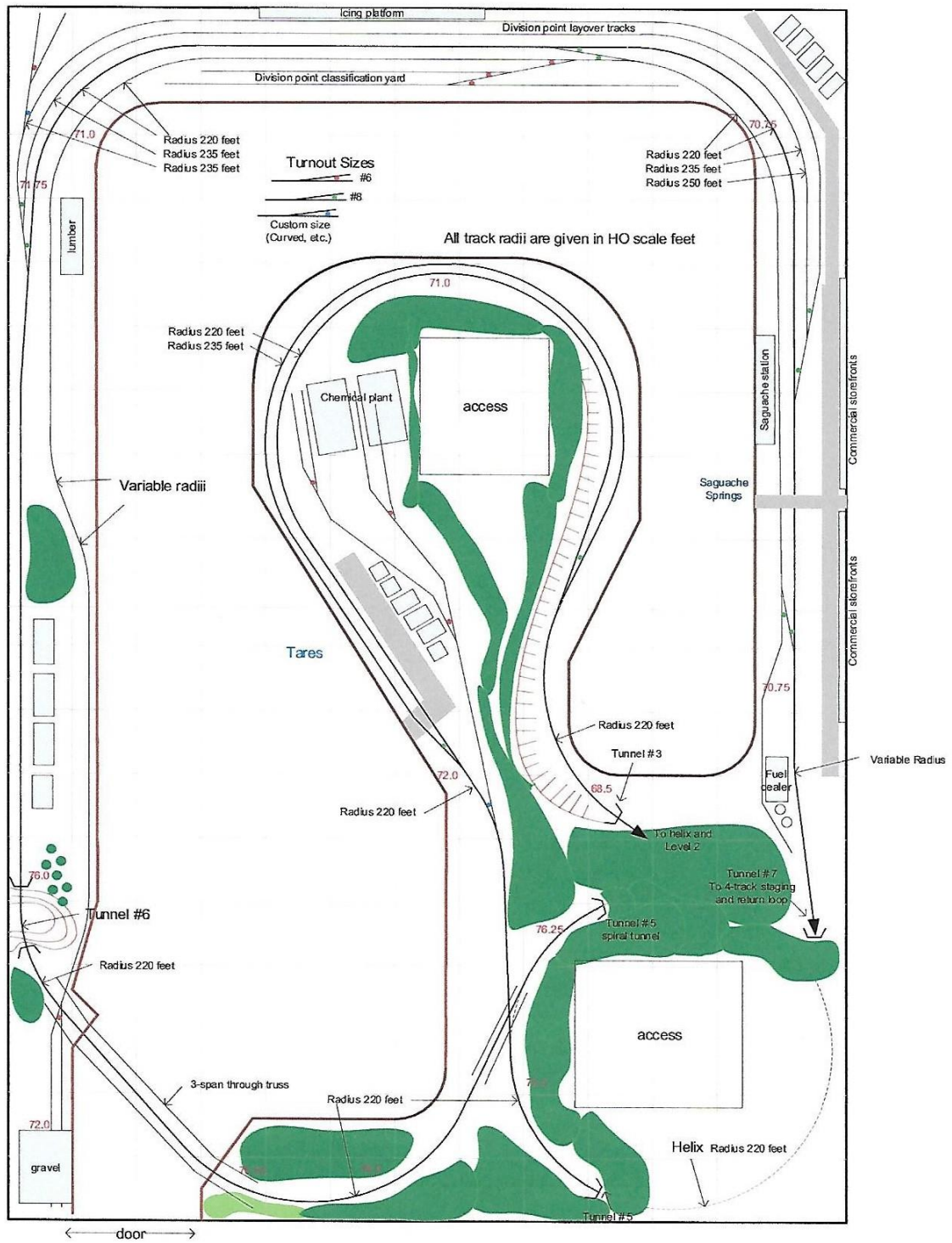
# Boreas & Saguache – Level 2

Layout size 13 x 9 feet. Each grid is 12" square (At full size, scale 1/2" = 1 foot)



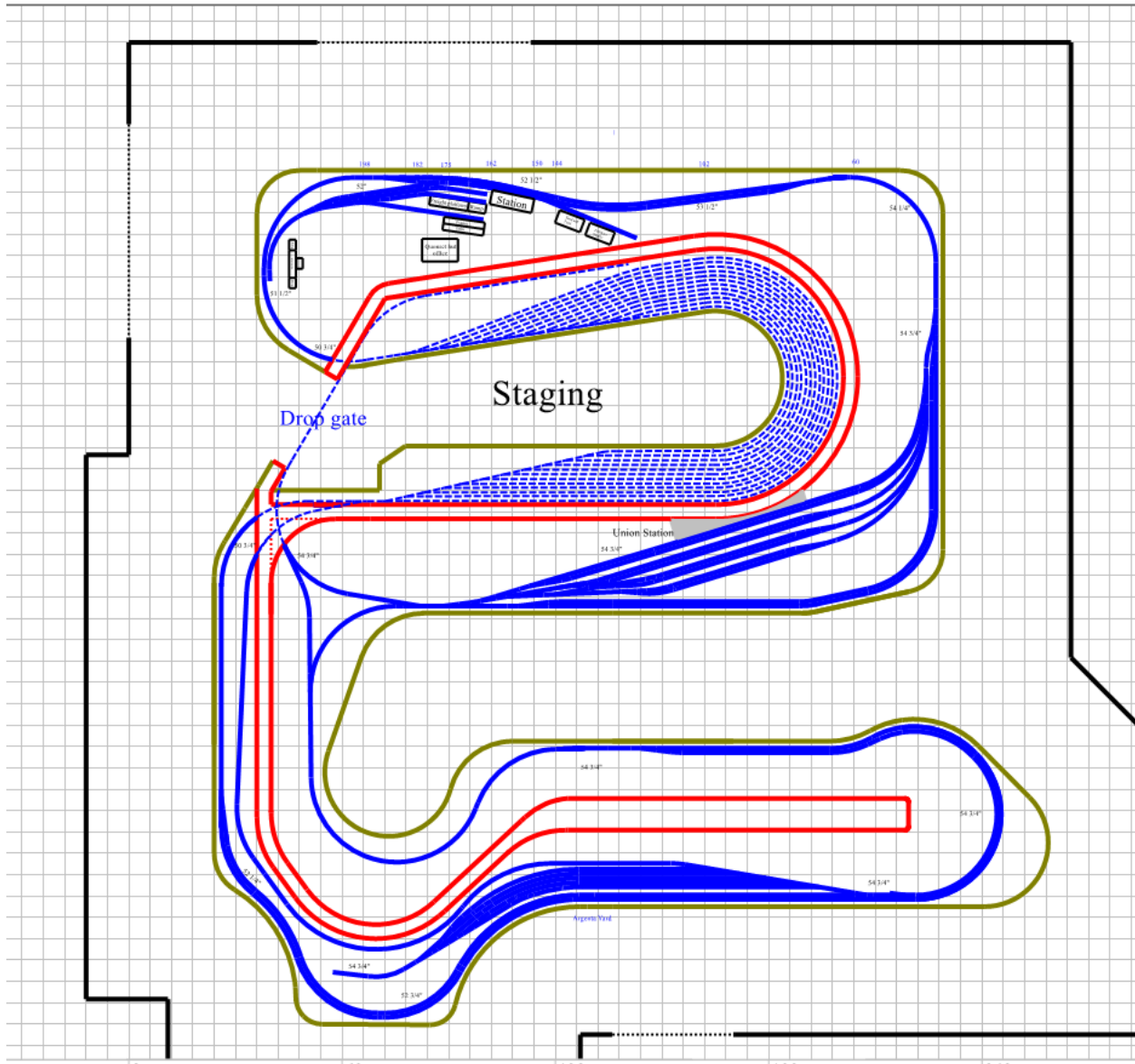
# Boreas & Saguache – Level 3

Layout size 13 x 9 feet. Each grid is 12" square (At full size, scale 1/2" = 1 foot)

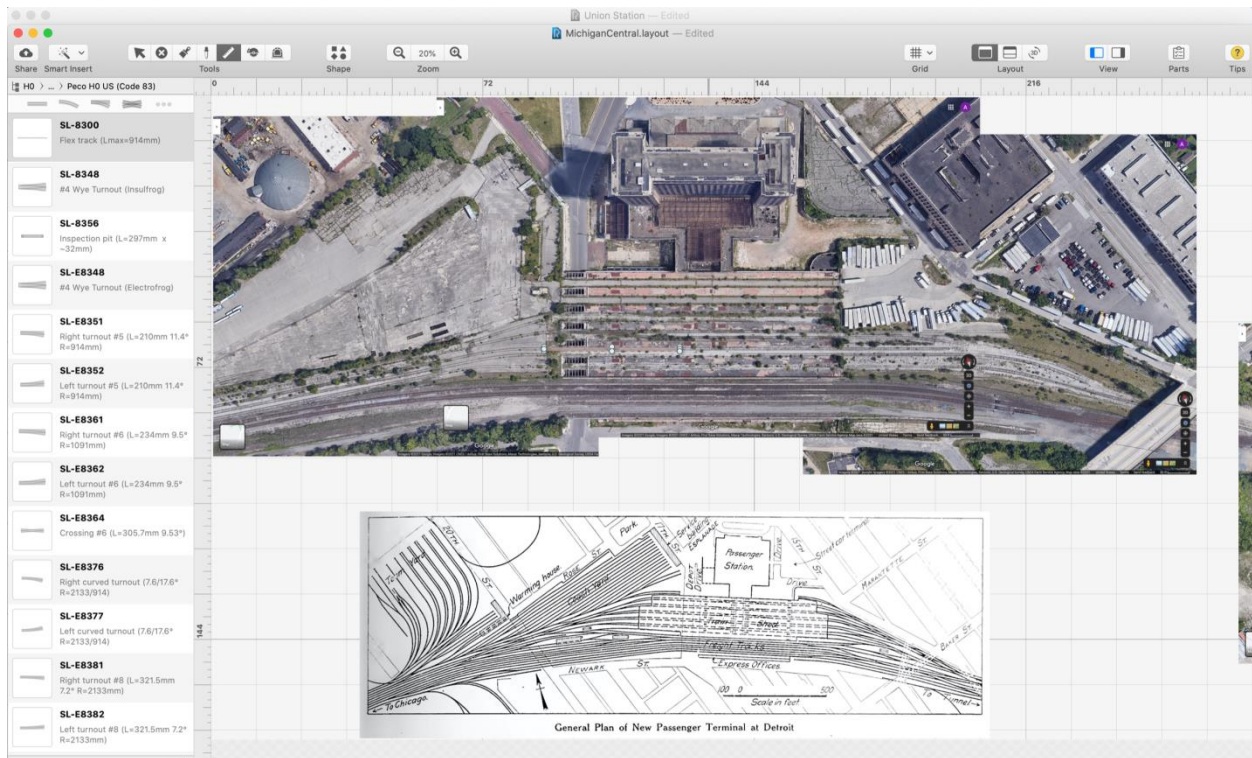




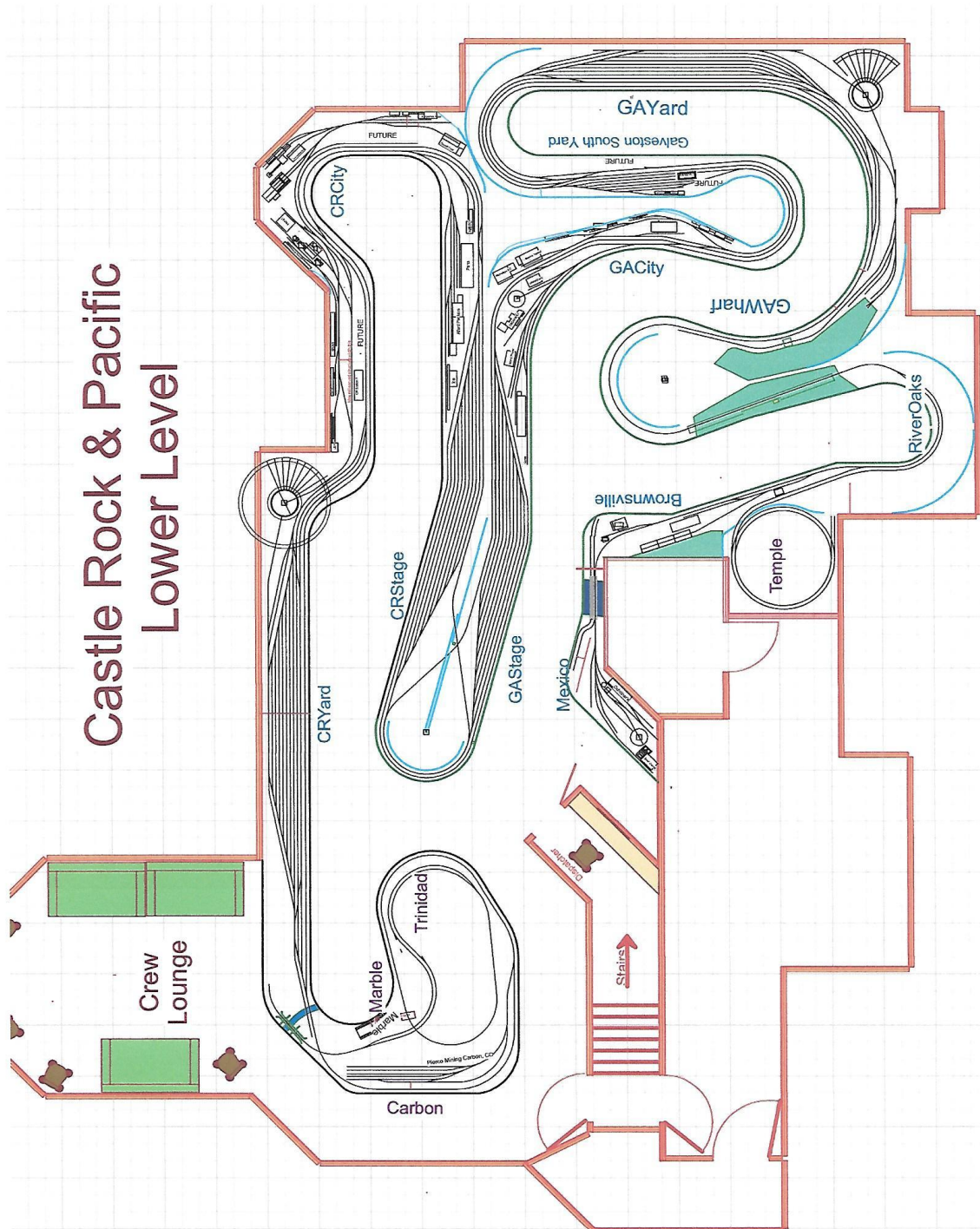
Bob Hochstetter presented his N scale layout plan, drawn using the Cadrail program, showing only the currently installed track. It does not show planned industrial or engine servicing track. Room size is approximately 23' x 23'.



Adam Crews demonstrated how he plans to use Rail Model Pro software, Google Earth screen shots and a 1914 track diagram to model the passenger terminal in Detroit.



And lastly, Dave Cochrun shared this drawing of the lower level of his new Castle Rock & Pacific layout:





And to demonstrate that all track plans do not have to be drawn using expensive CAD programs, I asked Rich Flammini to present his hand drawn track plan which is shown here:

