



June 2020

Volume 13, Number 6

Sunrise Division Officers

Superintendent.....William Boorman
Asst. Superintendent.....Dennis Hagen
Secretary.....Larry Stephens
Treasurer.....Rich Flammini
Program Chair.....Gary Myers
Division AP Chair..... Bob Rothgery
Youth Coordinator.....Ernee Edwards
Education Chair.....Stewart Jones
Modular Layout Chair.....Open
Herald Editor.....Larry Stephens
Web Site <http://trainweb.org/SunriseDivision>

Next Meeting

Our next Division meeting will be announced at a later date, at Holy Love Lutheran Church, 4210 South Chambers Road at 7PM.

Layout of the Month

This month we have two photos from David Danes; 60 feet of Free-Mo modules.



In the Herald

Next Meeting.....	1
Layout of the Month.....	1
From the Editor	2
June Meeting Notes	2
Upcoming Clinics for 2020	2
Upcoming Tool Times for 2020	2
Upcoming Show 'n Tell Themes for 2020	2
URL of the Month	2
Tool Time	3
Modules	4
I'm Not Cheap, I'm Frugal	4
Upcoming Events	4
Swap Meet	5
Trackside Photos	6

The Denver Library digital content:
<http://digital.denverlibrary.org/cdm/>

Layout photos from other members can be seen in the Members' Layouts page at:
<http://trainweb.org/SunriseDivision>

From the Editor

We have three members who have submitted photos for the Layout of the Month. I'll be posting them in order in the next two months. Send in at least two photos of your layout. Just grab your phone and take a couple of photos and send them to me. Take photos with your phone in the horizontal position.

With the upswing of Covid-19, I'm not even going to predict the next meeting. William is working on removing the bugs from Zoom sessions for the next several meetings.

June Meeting Notes

A June meeting using Zoom was held with some success. It was more of a chat than a meeting as only a few attended.

The meeting started with how to use Zoom and the various login problems. Some features of Zoom were also discussed. After we get comfortable with the basics, we can talk about features such as backgrounds, photos and videos. We have a couple of members on Zoom who cannot attend because of distance; others because of age or illness. This is one big advantage of Zoom.

William introduced us and asked us to talk about our layouts. We also discussed model telephone wires, do-it-yourself and Woodland Scenics poles.

William gave a clinic using Power Point. The presentation was the history of EMD locomotives from their beginnings in 1922 as Electro-Motive Corporation. Then, in 1930, they were purchased by General Motors which led to many different models being made. Covered in the presentation were the various engines used through the years with their horse power and the locomotives that used them.

William included many photos of these locomotives and the railroads that used these locomotives. With General Electric becoming the number one manufacturer, EMD sold out to Caterpillar Company. A video was shown of an SD70ACE running on liquid petroleum gas. BNSF is being used as a test pilot for this program. A question and answer session on locomotives was held afterwards. We ended the meeting talking about prototype trains.

Upcoming Clinics for 2020

The next several clinics will be rescheduled and posted in the Herald. November's clinic is cancelled because I'm not going to be able to follow through on several places I want to explore.

Layout Command Control

Detlef Kurpanek

5th Annual Sunrise Division Model

Railroad Auction - Rich Flammini

History of American Railroads

Stewart Jones

Open Source DCC - Thomas Wilcox

November - ~~Abandoned Railroad Routes You Can Drive, Walk, Jeep or Bike - Part Two~~
Larry Stephens

December - Movie (might be a good time to show a movie through Zoom. Public domain, of course).

Upcoming Tool Times for 2020

The Tool Times below will be rescheduled and posted in the Herald.

Corrugated Roofs & Siding - Dennis Hagen

Plate Glass as a Tool - Larry Stephens

Upcoming Show 'n Tell Themes for 2020

August - RR Artifacts & Relics

September - Refrigeration

October - Dwelling Structures

November - Express Cars

December - Holiday Theme

URL of the Month

Ken Cruse provided this: Since we do not know when we can get together again, I thought the guys would like to see a prototypical time in railroading. This video is from the 2018 NMRA Convention in Kansas City:

 [Tornado.MOV](#)

Recommended by my wife as WELL DONE!

Buffalo & Pittsburgh's train derailment:

<https://www.youtube.com/watch?v=oF2Gt-vhLf4>

Tool Time

Mega-Machines & Revisionist History

By Gary Myer

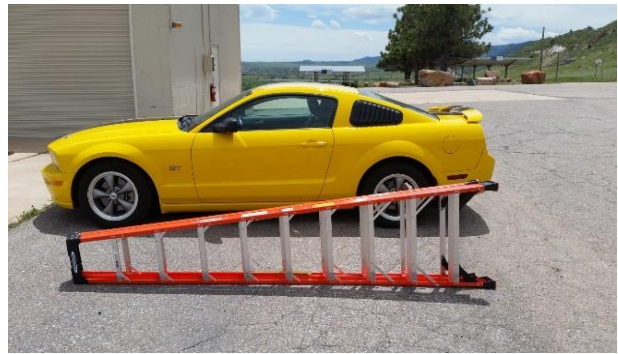
Sometimes, for big jobs, you need a big tool. At the clubhouse of the Scenic Line Modelers, we had a problem with our heater. The thermostat was stuck and the heater wouldn't turn off, so it was past time for a new thermostat. The problem was, really, that the thermostat was attached to the heater, which is suspended eight feet above the floor. For this job, I needed something taller than my 6-foot step ladder. Luckily for me, I had obtained a 10-foot fiberglass step ladder, to reach the overhead light in my arched ceiling kitchen.



My ladder did reach perfectly to the heater, and we ran a wire across to the wall, which was fished through, and a new thermostat mounted at an easily accessible height from the floor. (After several years of standing on a step stool with the thermostat knob barely in reach!)

All I had to do was get the ladder to and from the clubhouse, 30 miles from my garage. Luckily, I have a heritage and historical piece of equipment, legendary for its multi-purpose usage, the Ford Mustang. Now, to get a 10' ladder inside the Mustang's cargo compartment.

Amazingly, the versatility and incredible



history of the Mustang has been long ignored and generally never mentioned in the history books! The Ford Mustang was made famous by Chuck Norris, in Vietnam, which were used by his famed Cobra Raiders. Oft used by Norris's special commando unit, the specially rigged Mustangs gave the Cobra Raiders speedy and tactical access to attack enemy strongholds. The Mustangs included critical cargo space for the Raider's gear and special equipment. Chuck's unit was inspired by George Patton's rear echelon 3rd Army Mustang units of World War II, which were used to escort nurses and special supplies to the General's staff. Patton as a student of history, got the idea of these units from the former President, Teddy Roosevelt. It is believed that the long heritage of the Mustang originated with the special Mustang unit from Teddy Roosevelt's Rough Riders, who charged up San Juan Hill!

Tool Time

Mega-Machines & Revisionist History

(continued)

Old television coverage of the famous ticker tape victory parade of Teddy's riders showed them driving down Manhattan's famed Broadway Boulevard in their Mustangs, bedecked in red, white, and blue banners. Unfortunately, this rare television coverage has been lost!



Using strategic positioning of lawn cushions, the ladder is carefully inserted into the Mustang's special cargo compartment. The rear hatch is tied down to secure the equipment.



Cushions are wrapped around the ladder and secured with cushion ties, prior to securing the rear hatch. The cushions prevent scratching of the Mustang's camouflage paint scheme. The cushions are also available for special cargoes, such as providing a higher seat platform for short legged furry best friends of man.

Modules

The modules are in hibernation until the Covid-19 situation is over. With the close quarters of working on them, it will be awhile. Right now we don't have a place to work on them anyway. There are some repairs to be done but we can show them at the November TCA show (if held) without doing any work.

We have several members interested in working on the modules. The number one problem is, we now need a place to work on them. If you have a garage that has space for at least two of the modules standing on end (about 30" by 34"), we would love to have you join the module group. Even a walkout basement would work.

I'm Not Cheap, I'm Frugal

I regressed this time. I had to buy Dull Coat and Same Stuff solvent on EBay. Ouch!

The only place I saved money this month was around the house. Years of saving stuff so I can repair anything means: a lot of time looking, a lot of time repairing, but I saved a couple of bucks and I didn't need a mask to do it.

Upcoming Events

Events for June Cancelled

July 18 -- Sat 9AM to 11:30AM

[Model RR & Toy Train Swap Meet](#)

See page 5. It is going to be at The Forney Museum, outside.

July 30 – August 2

[Joint Lines to Pueblo, 2020 Rocky Mountain Region, NMRA Convention](#) -- **CANCELLED**

No Events for August

Sep 19 -- Sat 9AM to 11:30AM

[Model RR & Toy Train Swap Meet](#)

(303)361-9370

Green Mountain Presbyterian Church
12900 W. Alameda Pkwy, Lakewood

Model RR & Toy Train Swap Meet

(Submitted by the RR SWAPMEET)

Greetings to all- we hope you are still sane & healthy- and ready to "vent" a bit.....how about doing it at a **model RR swapmeet- JULY 18th** (our "regular" date) - **outdoors** at the Forney Transportation Museum in Denver ! ??

-----**LONG MESSAGE FOLLOWS:**

Hours will be as normal- **Sellers:** we will open at 7AM (no reserved spaces) for setup. **Buyers:** 9AM admission.....the swapmeet will go until 11:30-ish as per usual.

What's **NOT** 'as per usual' :

- 1). **ALL ATTENDEES-** that's **sellers & buyers-** are required to **wear a personal protective mask !**
- 2). **ALL ATTENDEES** will be asked to sign in, with basic info, for 'contact tracing' medical statistics *if needed later*.
- 3). We will have tables set up with "one-way" aisles, and good spacing between tables, so we can help maintain social distancing.
- 4). Restroom facilities are available; however there are no drinking fountains, and we will not have free coffee/doughnuts. **BRING YOUR OWN refreshments !!**
- 5). We will try to have hand sanitizer available- but sellers are encouraged to bring your own sanitizer and wet wipes, to help with safe health practices !!
- 6). It's outdoors; but *seller tables will be sheltered* from wind- against the building, and *in shade*, up until about "tear down" time. There are NO canopies, so we are depending on good weather (a summer morning- it should be fine....). The subject of canopies has come up, *but it's probably not necessary (read #6 again...!!) If you think you must have one, please make sure it is a reasonable size.*
- 7). There is plenty of parking available; sellers will be allowed to park nearby the exhibition area, for ease of hauling your 'stuff'; buyers park in normal parking lot (just a few steps away !). No "tailgate" selling. *No different than our usual routine at the church....*

8). Finally- we've been advised that the City of Denver may have personnel inspecting the venue, for compliance with all of the above-mentioned guidelines- *so let's follow the rules & play nice with others !! If you are concerned with health safety beyond the measures outlined here, then you probably shouldn't attend.....we will miss you !*

Now a "plug"- for the Forney Museum...they are incredibly gracious to host this; we hope you will take the opportunity to not only attend the swapmeet, but then later check out the museum !! They have changed/updated some displays, and feature new ones on a regular basis (note the flyer below)...a great way to spend some time out of the house, and in a safe environment.

Note the info following from the fabulous folks at Forney: (go ahead- say that quickly 3 times- I dare ya'...)

Below are a few of our policies and the link to our website to purchase tickets:

We are currently only accepting online ticket purchases, which are timed and limited to 30 people an hour. We cannot sell tickets at the door.

We are open to the public Fridays and Saturdays, from 10am-4pm, and Sundays from 12pm-4pm.

We require everyone to wear a mask at all times when in the building.

We do not allow purses, bags or backpacks inside the exhibit hall. Our lockers are currently out of order. Please make appropriate accommodations before entering the building.

Our gift shop is open, however we are accepting credit cards only, no cash.

Here is a link to the website, on the homepage, underneath the blue box that describes our reopening plan, is a **link to purchase tickets:** <http://www.forneymuseum.org/>

Please don't hesitate to ask any questions or concerns. You may email

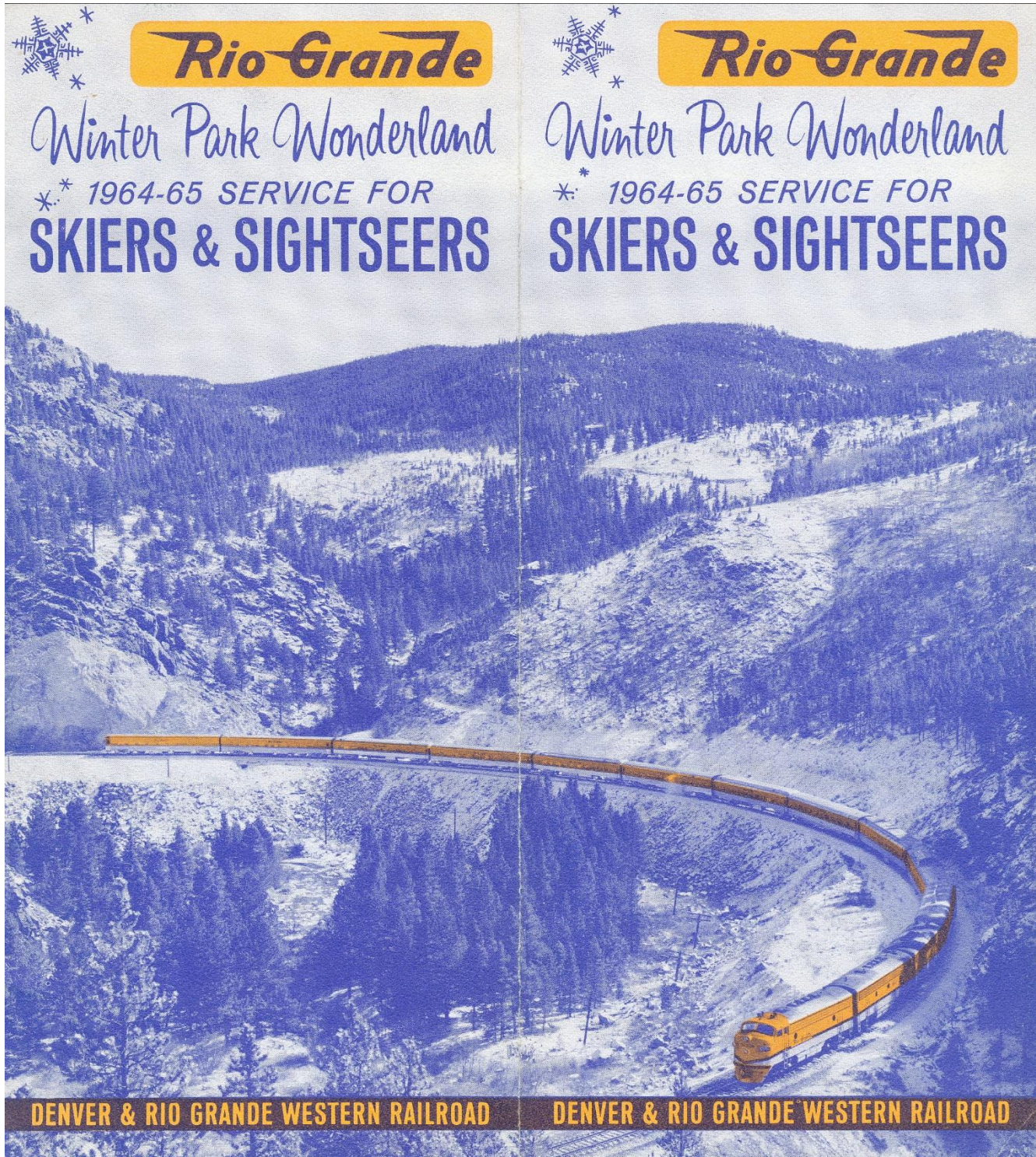
at collections@forneymuseum.org, or call us at 303-297-1113. **Address: 4303 Brighton Blvd, Denver, CO 80216 (2 blks S. of I-70, exit 275B, just past Denver Coliseum, on West side of Brighton Blvd.**

Track Side



Photos

Let's go back, way back, to a simpler time.



SKI TRAIN to WINTER PARK

... Car-free, carefree travel Every Weekend of the Ski Season

Saturday and Sunday
Lv. Denver 7:45 AM
Ar. Rocky 8:10 AM
Ar. Winter Park 9:40 AM

Lv. Winter Park 4:15 PM
Ar. Rocky 5:45 PM
Ar. Denver 6:15 PM

Diesel-powered train . . . steam heated coaches . . . super snack car serving sandwiches, coffee, soft drinks.

ONLY
\$3¹⁰
ROUND TRIP

Private cars for groups of 40 or more on Sundays.

TICKETS AT: Rio Grande City Ticket Office, 1531 Stout St.

Eskimo Ski Shop, Inc.

414 E. 7th Avenue

3856 Wadsworth

Denver Union Station

Dave Cook Sporting Goods Company

1601 Larimer St. or 610 16th Street

or Univ. Hills Shopping Center

or Westland Shopping Center

Arapahoe Sports

Boulder and Longmont

TICKETS SHOULD BE PURCHASED

BEFORE BOARDING

TRAIN

Gart Brothers

Sporting Goods Company

1643 Larimer Street

303 16th Street

3901 E. Colfax

3449 So. Broadway

Swiss Chalet • 1344 Broadway

Ross Chivers Sports

On the Hill • Boulder, Colorado

For Sightseers, Too—

The Ski Train traverses the scenic Moffat Tunnel Route providing a spectacular view of the Colorado Rockies not afforded by any other means of transportation. At Winter Park, the train is parked near the sports area, permitting full view of all activity on the slopes.

HOCHLANDHOF Mountain Outin'

6½ HOUR SCENIC SPECIAL EVERY DAY \$5.00

The car-free, carefree way to see the best of the West!

YOUR SCHEDULE FOR PLEASURE:

Lv. Denver Union Station (D&RGW Train #9) 9:05 AM

Big picture windows provide an ever-changing scenic panorama as your Rio Grande train glides through the heart of the Rockies via the famous Moffat Tunnel Scenic Shortcut.

Ar. Winter Park 10:52 AM

You will be met at trainside and taken to picturesque Hochlandhof—High Country Inn—800 feet from the base of Winter Park. A delicious full-course luncheon will be served to you in the Bavarian dining room of the luxurious lodge.

Lv. Winter Park (D&RGW Train #10) 1:22 PM

Ar. Denver Union Station 3:20 PM

Complete cost only \$5.00 for adults, \$2.75 for children over 5 and under 12 years of age.

TICKETS ON SALE RIO GRANDE CITY TICKET OFFICE
1531 STOUT STREET AND DENVER UNION STATION

AT WINTER PARK PACKAGE

