



April 2020

Volume 13, Number 4

Sunrise Division Officers

Superintendent.....William Boorman
Asst. Superintendent.....Dennis Hagen
Secretary.....Larry Stephens
Treasurer.....Rich Flammini
Program Chair.....Gary Myers
Division AP Chair..... Bob Rothgery
Youth Coordinator.....Ernee Edwards
Education Chair.....Stewart Jones
Modular Layout Chair.....Don Francis
Herald Editor.....Larry Stephens
Web Site <http://trainweb.org/SunriseDivision>

Next Meeting

Our next Division meeting is going to be Thursday, July 2, 2020, at Holy Love Lutheran Church, 4210 South Chambers Road at 7PM.

Layout of the Month

This month we have a couple of photos from Dennis Hagen's Layout.



Dennis's photos of his layout and layouts from other members can be seen in the Members' Layouts page at: <http://trainweb.org/SunriseDivision>

In the Herald

| | |
|--|-----|
| Next Meeting..... | 1 |
| Layout of the Month..... | 1 |
| From the Editor..... | 2 |
| April Meeting Notes..... | 2 |
| URL of the Month..... | 2 |
| Upcoming Clinics for 2020..... | 2 |
| Upcoming Tool Times for 2020..... | 2 |
| Upcoming Show 'n Tell Themes for 2020..... | 2 |
| Blue Rail Trains | 2 |
| One Thing Leading to Another..... | 3-4 |
| Modules..... | 4 |
| Tool Time..... | 4 |
| I'm Not Cheap, I'm Frugal | 5 |
| Upcoming Events..... | 5 |
| Trackside Photos..... | 6 |

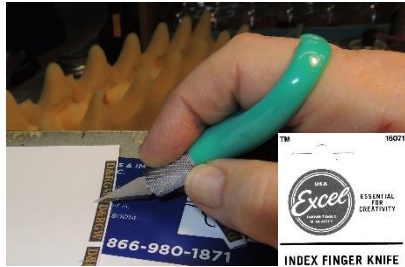
The Denver Library digital content.
<http://digital.denverlibrary.org/cdm/>

From the Editor

New to the Herald is Layout of the Month which will be on the front page. You may send in at least two photos of your layout.

In the meantime, I ran out of #11 Excel blades. While ordering more from Amazon, I came across

this knife, which I couldn't pass up. It is now my main blade holder.



April Meeting Notes

In lieu of our April meeting, I came across this information from the Tomar Web site:

"We would like to say "Thanks" for your patronage of over 36 years. Tomar Industries and Utah Pacific have been sold to P.F. & S. Railway Supply, Inc. LeRoy, Sharon, Joel & Teresa Prantle are excited to make all the products we have supplied in the same quality we have all these years. You, our customers, have been important to us and we have made every effort to make products that you would be proud to put on your layout.

Please contact **P.F. & S.** at (509) 528-9711 to place **Tomar & Utah Pacific** orders.

Don't forget--we still have Alexander Scale Models and Stewart Products and can now spend time producing products that have been off the market and on the back burner plus the ones that exist in the line. We can be reached at 9520 E. Napier Ave., Benton Harbor, MI 49022, phone (269) 944-5129 to place orders. "

Duane & Marie

URL of the Month

Westinghouse Air Brakes, how they work.

<https://trn.trains.com/bonus/wabtec>

More from the TCA train show. Sunrise modules start at 3:20, end at 4:50:

<https://www.youtube.com/watch?v=y2uM7ayTuBI>

Micro-Trains Factory Tour

<https://www.youtube.com/watch?v=Zd-Zbob9lBo>

Upcoming Clinic for 2020

July, August, September and October clinics will be rescheduled and posted in the next Herald. **Novembers** clinic depends on me getting up to the mountain towns this summer to check out more abandoned grades.

Layout Command Control

Detlef Kurpanek

5th Annual Sunrise Division Model

Railroad Auction - Rich Flammini

History of American Railroads

Stewart Jones

Open Source DCC - Thomas Wilcox

November – Abandoned Railroad Routes you can Drive, Walk, Jeep or Bike Part Two

Larry Stephens

December – Movie

Upcoming Tool Times for 2020

July and August Tool Times will be rescheduled and posted in the next Herald.

Corrugated Roofs & Siding - Dennis Hagen

Plate Glass as a Tool - Larry Stephens

September-December – TBD

Upcoming Show 'n Tell Themes for 2020

July – Railroad Structure

August – RR Artifacts & Relics

September – Refrigeration

October – Dwelling Structures

November – Express Cars

December – Holiday Theme

BlueRail Trains

BlueRail Trains has been developing battery powered controls for running trains. I have been following what they do, but I am not going that route. This might be of interest to those starting out in the hobby. Web site:

<http://bluerailtrains.com>

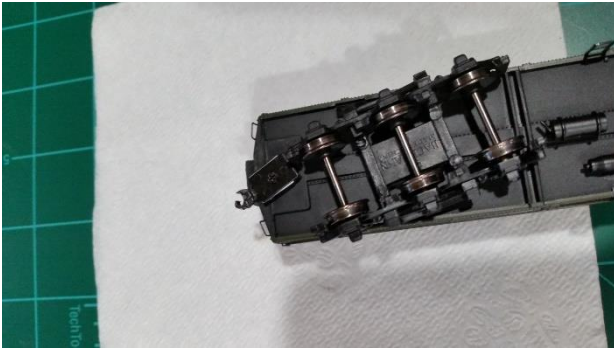
What they have to offer:

<http://bluerailtrains.com/tam-valley-dcc/>

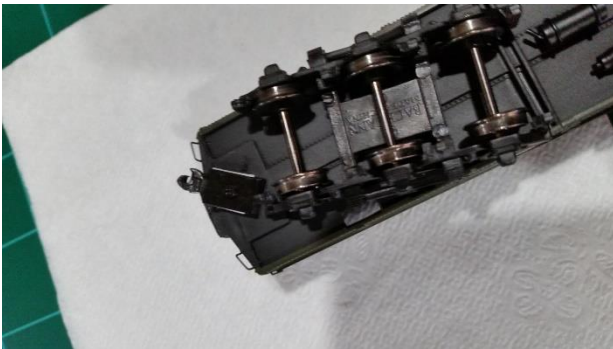
One Thing Leading to Another

By Gary Myers

My Bachmann Spectrum Combine had Accumate couplers that I wanted to replace with Kadee scale couplers. Trouble was, the coupler box was not deep enough for the original or replacement couplers, causing them to bind or "stick."



So, I made shims from pieces of thin styrene stock. Using CA to glue the shims in place was a bit tricky, with the different material surfaces and narrow edges. No big deal for most coupler pockets, except these rotate as the truck turns to permit tight coupling.



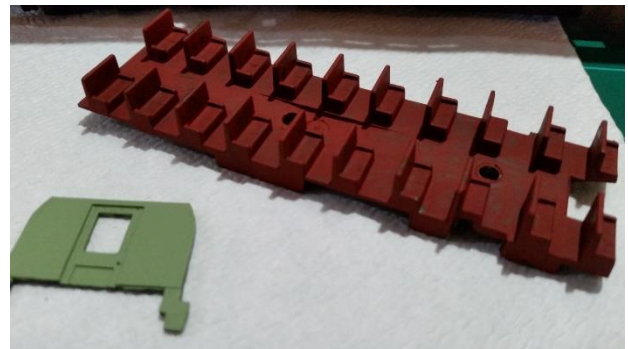
After successfully shimming and replacing couplers in several other cars, I managed to touch up too much CA to some shims and accidentally glued one coupler pocket to the car. After a lot of prying I was able to 'break' the CA grip, and after a lot of digging, I removed most of the CA residue. Unfortunately, the coupler pocket would not move smoothly and caused the truck not to rotate freely. I was forced to remove the rotating coupler box to make things work better.



Upon removal of the single piece roof+clear window shell, I found that the coupler box had a shaft extended into the car body, which was 'melted' down on top of the fulcrum attached to the truck.

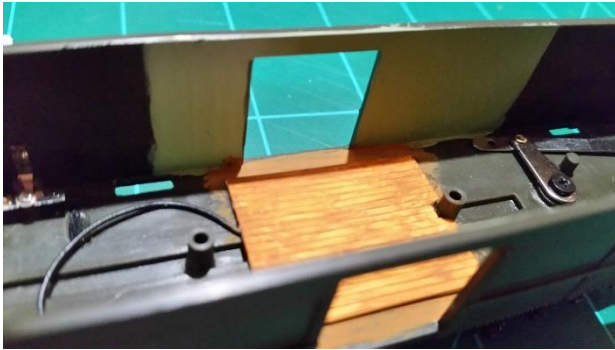


I carefully cut away the melted top of the coupler shaft, cleaned up the top, making sure to leave the rectangular top of the shaft flush with the fulcrum. I removed the coupler box from the bottom of the car, cleaned up and smoothed all surfaces. I drilled a #66 hole and inserted a self-tapping screw/washer to hold the coupler box in place and to lock the fulcrum. The mechanism worked as good as new!

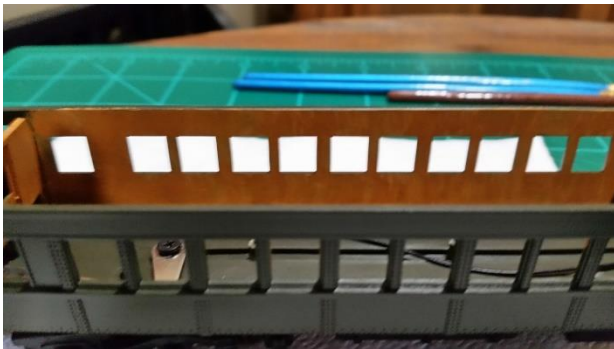


Well, now that I had the car all opened up, it made sense to work on the interior. I removed the seats and painted them with Barn Red acrylic, which looks like a burgundy.

One Thing Leading to Another (continued)



I painted the baggage compartment a sea-green acrylic. I discovered that the side baggage doors could be slid into the open position, so I cut some ribbed styrene into a floor and painted it honey brown acrylic.



For the interior "varnish," I used the same honey brown with an additional layer of raw sienna acrylic. I am not done yet; I will add another layer of darker brown until I like it. Of course, I will add white head rest cloths to the seats, and then there are passengers to add, and some baggage in the baggage doorway

This car is lighted, so it should be quite satisfying when complete. At least the couplers work again. Stay tuned!

Modules

The modules are in hibernation until the Covid-9 situation is over. With the close quarters of working on them, it will be awhile.

Tool Time

New Out-of-the-Box Wheel Checkout Gary Myers

As I bring new rolling stock out of the box (and so called ready-to-run), I switch out the No. 5 couplers with the "scale" No. 58 Kadee coupler (still slightly large to scale). I now also pay a lot more attention to wheel gauge (with a recent rash of derailments).



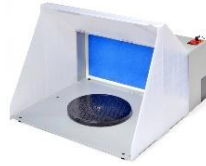
In the left photo, you can see how the under-gauged wheel is severe enough that the gauge can actually hold the wheel set suspended in air. This particular wheel set is from a Broadway Limited 53' 6" express refrigerator car. Nearly every axle on my three RTR kits had this problem. I used a pair of pliers to slightly spread the wheel (right photo), careful not to bend the axle. I tried using my NorthWest Short Line Puller II to push on one wheel but my push pins are only good for flat end axles, not sharp conical tips. NWSL has been bought by an employee who plans to continue most of their line. They show an accessory for wheel pullers on: <https://www.nwsl.com>.

I also had this problem with many of my 86' Walther's heavyweights. After finally digging them out to run, I especially had problems with the Dining Cars. They had many derailments, including going in and out of the layout's helix. The wheels were so bad that a touch of CA was required to keep them in gauge while re-inserting into the trucks. This has cleared up derailments. These were six-axle passenger cars, by the way.

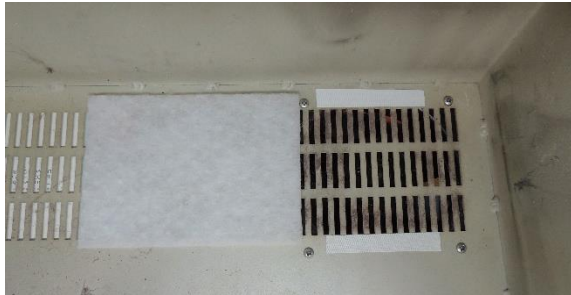
Before you place your wheels back on, this would be a good time to make sure the axle does not have both wheels electrical hot to the axle. This was a problem with a brand new out-of-the-box coal car at the TCA show. It took the whole layout down.

I'm Not Cheap, I'm Frugal

An update to my "I'm Not Cheap, I'm Frugal" column in the February issue. I bought the Extreme Power medium thickness CA glue from Hobby Lobby and have been using it, whereas before I had used the thicker Gorilla Super Glue. Much, much better, as it flows easier and has a faster drying time of about 5 to 10 seconds.



I needed a paint booth several years ago but not bad enough to pay for one. You would spend \$424.95 for the one on the left and \$129.95 for the one on the right.



I made one from a very old aluminum computer monitor cover. One can even be fabricated out of wood or heavy duty cardboard.

I first cover up the grill except where the fan goes. I put two Velcro hooks strips to hold vent filters. (Home Depot SKU #670128)



I then made an adapter plate out of four layers of cardboard with a 4" hole cut out. Next I glued the cardboard to a 4" pipe hose adapter (Home Depot SKU # 1001839325). I use gorilla glue as it expands when it dries.

I next mount a 5" fan between the cabinet and adapter plate.

I then connect one end of a Flexible Dust Collection Hose (Home Depot SKU # 1001854681) to the adapter then the other end to a round hole I cut in the cardboard which fits in the basement window. When done I remove the cardboard or cover hole with another piece of cardboard.



Upcoming Events

Apr 30 – May 2

Rio Grande Modeling & Historical Society Mile High Spring Meet with the Burlington Route Historical Society 2020 Spring Meet

CANCELLED

More information <https://www.rgmhs.org/>

May 13 – 16

Union Pacific Historical Society Convention

CANCELLED

<http://uphs.org/conventions/future-conventions/>

<http://uphs.org/conventions/current-convention/convention-updates/>

St. Louis 2020 National Convention and National Train Show **CANCELLED**

May 16 – 17 - 10AM to 5PM Sat; 12 PM to 4PM Sun
Sherman Hill Annual Train Show
Frontier Exhibition Hall

Closed until further notice due to COVID-19
<http://shermanhillrails.org/>

May 23 - Sat 9AM to 11:30AM

Model RR & Toy Train Swap Meet
(303) 361-9370

Green Mountain Presbyterian Church
12900 W. Alameda Pkwy, Lakewood

Track Side



Photos

The following two photos were taken at Plainview Road about a mile north from where the UP tracks cross Coal Creek Canyon Road heading to the Moffat Tunnel. The first photo is my visualization. A simple view of the track. The second photo is what my wife sees. A more complex scene with the track as part of the scene.

